



**WORK SESSION**  
**5:30 PM Upper Level Conference Room**

**WAITE PARK CITY COUNCIL AGENDA (AMENDED)**  
**MONDAY, AUGUST 7, 2017 - 6:30 P.M.**

6:30 P.M. Pledge of Allegiance  
Open Forum – two minute limit

Review and approve, August 7, 2017 Council Agenda

1. Consent Agenda:

Recommended action: approval of following items

- A. Approve Council Minutes of July 24, 2017
- B. Approve Pickleball Court Change Order #2
- C. Approve Hiring of Firefighters
- D. Approve St Cloud Youth Hockey Gambling License at Friend's Bar
- E. Approve All Hazard Mitigation Plan
- F. Approve Change Order for Public Works Building

2. Approve Plans and Specifications for Graniteview Road and Authorize for Bids

3. Council/Mayor

- A. Review and Approve Bills
- B. Water Towers**

4. Administrator

- A. Updates

**ADJOURN**



**WORK SESSION**  
**5:30 PM Upper Level Conference Room**

**WAITE PARK CITY COUNCIL AGENDA**  
**MONDAY, AUGUST 7, 2017 - 6:30 P.M.**

6:30 P.M. Pledge of Allegiance  
Open Forum – two minute limit

Review and approve, August 7, 2017 Council Agenda

1. Consent Agenda:

Recommended action: approval of following items

- A. Approve Council Minutes of July 17, 2017
  - B. Approve Pickleball Court Change Order #2
  - C. Approve Hiring of Firefighters
  - D. Approve St Cloud Youth Hockey Gambling License at Friends Bar
  - E. Approve All Hazard Mitigation Plan
  - F. Approve Change Order for Public Works Building
2. Approve Plans and Specifications for Graniteview Road and Authorize for Bids
3. Council/Mayor
- A. Review and Approve Bills
4. Administrator
- A. Updates

**ADJOURN**

**CITY OF WAITE PARK  
CALL TO ORDER –**

**PLEDGE OF ALLEGIANCE  
OPEN FORUM**

**Review and Approve August 7, 2017 City Council Agenda**

Councilmember \_\_\_\_\_ moved that the Council Agenda for August 7, 2017 be approved as presented.

Councilmember \_\_\_\_\_ seconded the motion.  
Motion (Approved) (Denied)

**Agenda Item No. 1-Consent Agenda**

---

1. Consent Agenda:

Recommended action: approval of following items

- A. Approve Council Minutes of July 17, 2017
- B. Approve Pickleball Court Change Order #2
- C. Approve Hiring of Firefighters
- D. Approve St Cloud Youth Hockey Gambling License at Friends Bar
- E. Approve Resolution for Adoption of the Stearns County All-Hazard Mitigation Plan
- F. Approve Change Order for Public Works Building

Councilmember \_\_\_\_\_ moved that the Consent Agenda, as presented, be approved.

Councilmember \_\_\_\_\_ seconded the motion.

**ROLL CALL**

Councilmember Michael Linquist \_\_\_\_\_  
Councilmember Charles Schneider \_\_\_\_\_  
Councilmember Vic Schulz \_\_\_\_\_  
Councilmember Frank Theisen \_\_\_\_\_  
Mayor Richard Miller \_\_\_\_\_

Motion (Approved) (Denied)

## WAITE PARK CITY COUNCIL MEETING

JULY 17, 2017

A meeting of the Waite Park City Council was held at Waite Park City Hall on Monday, July 17, 2017 beginning at 6:30 PM.

### MEMBERS PRESENT

Members present were Mayor Miller, Councilmembers Linquist, Schneider, Schulz and Theisen

### CITY REPRESENTATIVES PRESENT

City Representatives present were City Administrator Johnson, Deputy Clerk-Treasurer Virnig, Chief of Police Benrud, Public Works Director Schluenz, Planning and Community Development Director Noerenberg, Attorney Hansmeier, SEH Engineer Wotzka

### OTHERS PRESENT

Kevin Freihammer, Peg Imholte, Frank Imholte, JW Norrell, Sr., Tim Gunther, Brian Catton, Paula Fitzgerald

### OPEN FORUM

Mayor Miller invited anyone wishing to speak during the open forum to step forward, but no one came forth.

### COUNCIL AGENDA

Motion by Member Theisen, second by Member Linquist, to approve the 7/17/17 Council Agenda as presented. The motion carried unanimously.

#### 1. CONSENT AGENDA

Motion by Member Schneider, second by Member Schulz, to approve the following 7/17/17 Consent Agenda items:

- 1.A. Approved Council Minutes of June 26, 2017
- 1.B. Approved On Sale Liquor License, Sunday Liquor License and 2 AM License for new owner of Friend's Bar – 236 2<sup>nd</sup> Avenue South
- 1.C. (Pulled for discussion – regarding Appointment of Utility Operator)

The motion carried unanimously.

#### 1.C. APPOINTMENT OF UTILITY OPERATOR

Motion by Member Schneider, second by Member Schulz, to approve the appointment of Tim Gunther to the Utility Operator position starting at Grade 6, Step 3 with a 6-month probation period. The motion carried unanimously.

#### 2. CONDITIONAL USE PERMIT – NOVEL SOLAR FIVE LLP AND FRANK AND MARGARET IMHOLTE TRUST – 8158 COUNTY ROAD 138

A request has been submitted by Novel Solar Five LLP on behalf and with permission of Frank B. & Margaret Imholte Trust (property owners) to allow for a 1MW standalone solar array in an A-1, Agricultural/Rural Residential District. The proposed use would be located on the northern portion of property owned by the Imholtes and located at 8158 County Road 138, on the northern side of the road and to the north of their home.

Per the A-1, Agricultural/Rural Residential District standards, Staff has made the previous determination that standalone solar arrays are considered a conditional use within the district, under the broader classification of "essential services, governmental and public utility buildings and structures".

The proposed solar array is intended to serve as a "community solar garden" as per an Xcel Energy program approved and supported by the State of Minnesota to provide for renewable energy supplies. The intent of such a community solar garden is to offer subscription-based solar power options to homes and businesses which are unable to install solar facilities upon their own property. This

## **2. CONDITIONAL USE PERMIT – NOVEL SOLAR FIVE LLP AND FRANK AND MARGARET IMHOLTE TRUST – 8158 COUNTY ROAD 138 (Cont'd.)**

proposed site would generate 1MW of power and the land would continue to be owned by the Imholtes, with a lease to Novel Solar Five LLP for the project duration of 25 years. The intent would be to remove the solar components and all associated equipment at the end of the 25-year period.

The total proposed array was outlined on the presented site plan. The array would consist of 4,680 total solar panels, with 9 rows with 30-foot row-to-row spacing. The racking system and panels are of a static (non-moving) design and do not track or follow the sun. They have an average overall height of 9 ½ feet, although some may be up to a maximum of 15 feet in height depending on grade in their location. The proposed layout is subject to engineering and final Xcel program approval and may change slightly prior to construction, but would be subject to review/approval by both City of Waite Park and the Sauk River Watershed due to its proximity to the Sauk River.

The proposed array would be located approximately 450 feet from County Road 138 and approximately 150 feet from the adjacent Donovan property. The adjacent property to the east is farmed land and would be an approximate 325 foot setback. Transformers and related equipment would be placed on a 16' x 23' concrete slab adjacent to the array. The site would have gated access (with provision for emergency response personnel) and a security fence around the perimeter. If approved, construction is proposed for late summer or fall of 2017.

An access road would be constructed to the array, for construction and periodic maintenance use, sharing existing entrance to the Imholte property off of CR 138.

The ground area underneath the array is proposed to have vegetation with low maintenance turf or similar seed mix, with pollinator plantings and/or native grasses per the presented landscaping plan. Periodic site maintenance would be utilized throughout the life of the array to control vegetation growth.

In reviewing the proposal with other City departments during a standard review meeting, it was noted that the City has interest in maintaining an easement for a future bicycle trail connection through the Imholte property, as has been identified as part of the parks and trail planning. At this time it has not been determined whether the trail should or will run either along the Sauk River on the northern side or adjacent to County Road 138 on the southern side of the property. The configuration of the solar array seems to be such that it would not restrict a possible future trail from locating along it should that option be pursued, but it is possible that some of the proposed trees noted as part of the landscape plan could be impacted.

Due to the uncertain timelines associated with trail development, Staff would recommend making it a condition of approval that the property owners be willing participants to future easement, to be determined at a future date as necessary and subject to further discussion and agreements between all parties.

The Planning Commission held a public hearing and reviewed the request at their July 11<sup>th</sup> meeting and recommended approval of the request. Aside from a brief presentation by the applicants and reading of a written statement submitted by the property owners in favor of the request, no public comments or testimony was received. Staff has not received any questions or comments regarding the proposal from the public as of Thursday, July 13<sup>th</sup>.

Staff recommends approval of the Conditional Use Permit to allow a 1MW solar array in an A-1, Agricultural/Rural Residential District with the following conditions:

1. The property owners or their heirs/successors shall be willing participants in dedication of a future trail easement upon the property, to be determined at a future date. Trail easement may require removal and/or relocation of landscaping.
2. Landscape plan shall be implemented as submitted and reviewed unless otherwise approved by the City of Waite Park Planning & Community Development Director. Use of pollinator blend for site is encouraged.
3. Site layout shall adhere to proposed configuration submitted unless specific approval is provided by the City of Waite Park. Major modifications may require review by the Planning Commission and City Council.
4. All necessary building, land disturbance, and electrical permits shall be obtained prior to project commencement.
5. Approval of Sauk River Watershed District for finalized project configuration shall be submitted at time of building permit application.

## **2. CONDITIONAL USE PERMIT – NOVEL SOLAR FIVE LLP AND FRANK AND MARGARET IMHOLTE TRUST – 8158 COUNTY ROAD 138 (Cont'd.)**

6. The project shall be decommissioned and the site returned to pre-construction conditions by the end of 2044.

The location of this property and the flood plain were discussed. Attorney Hansmeier stated it should be noted with recommendation #1 that the agreement to give an easement shall be a recordable document, which will need to be recorded before the CUP.

Motion by Member Schulz, second by Member Theisen, to approve the Conditional Use Permit to allow a 1MW solar array in an A-1, Agricultural/Rural Residential District with the following conditions:

1. The property owners or their heirs/successors shall be willing participants in dedication of a future trail easement upon the property, to be determined at a future date. Trail easement may require removal and/or relocation of landscaping. This agreement to give an easement shall be a recordable document, which will be recorded before the CUP.
2. Landscape plan shall be implemented as submitted and reviewed unless otherwise approved by the City of Waite Park Planning & Community Development Director. Use of pollinator blend for site is encouraged.
3. Site layout shall adhere to proposed configuration submitted unless specific approval is provided by the City of Waite Park. Major modifications may require review by the Planning Commission and City Council.
4. All necessary building, land disturbance, and electrical permits shall be obtained prior to project commencement.
5. Approval of Sauk River Watershed District for finalized project configuration shall be submitted at time of building permit application.
6. The project shall be decommissioned and the site returned to pre-construction conditions by the end of 2044.

The motion carried unanimously. Discussion was held on the future description of the easement and extension of the CUP in the future, which would need to be requested and approved by the City Council at a future date.

## **3. AWARD 2017 WELL #6 IMPROVEMENT PROJECT**

This project was bid in two contracts, the Well construction (Contract A), and the piping, site and electrical work (Contract B). The Bid Tabulations and Letters of Recommendation of award were presented to the City Council. Because both contracts were over the engineer's estimate, Staff has incorporated some design changes to reduce project costs. One of the items explained that brought the project costs over the estimate was that a temporary portable treatment unit will need to be brought to the site to clean up the water and then discharge it. This is to develop the well, pump it and test it to make sure it has sufficient capacity. Discussion was held on the proposed changes to the project to save some costs. As such, Staff is concurrently recommending Change Orders to both contracts.

Staff recommends the following approvals:

Approve award of Contract A: Well #6 Improvements to Traut Wells in the amount of \$228,235.00

Approve award of Contract B: Well # 6 Improvements to Magney Construction in the amount of \$379,069.00

Approve Change Order # 1 to Contract A: Well #6 Improvements for a total price reduction of \$9430.00.

Approve Change Order # 1 to Contract B: Well # 6 Improvements for a total price reduction of \$90,205.00.

Motion by Member Schulz, second by Member Theisen, to award and approve the following:

Award of Contract A: Well #6 Improvements to Traut Wells in the amount of \$228,235.00

Award of Contract B: Well # 6 Improvements to Magney Construction in the amount of \$379,069.00

Approve Change Order # 1 to Contract A: Well #6 Improvements for a total price reduction of \$9430.00.

Approve Change Order # 1 to Contract B: Well # 6 Improvements for a total price reduction of \$90,205.00.

### **3. AWARD 2017 WELL #6 IMPROVEMENT PROJECT (Cont'd.)**

Member Theisen was concerned about where the extra money will come from, especially being the cost is coming from an enterprise fund.

Ayes: Mayor Miller, Members Linquist, Schneider, Schulz

Nays: Member Theisen

Abstained: None

The motion carried.

### **4. AWARD 2017 CLOUD PARK AND 6<sup>TH</sup> AVENUE IMPROVEMENT PROJECT**

Presented were a Bid Tabulation and Letter of Award Recommendation regarding the 2017 Cloud Park and 6<sup>th</sup> Avenue Improvement Project. There were two Alternates that were bid as part of this project. Alternate 1 was to edge mill and pave the block of 6<sup>th</sup> Avenue from Division Street to First Street South (adjacent to the new hotels), Alternate 2 was to reclaim (grind up) the pavement on Old TH 23, which is by the Anderson property, east of Bel Clair Drive. After discussion with Public Works staff, Staff's recommendation is to accept Alternate 2, and not Alternate 1. In addition, Public Works is recommending that a bituminous surface be added to the Old TH 23 segment of the project. Depending on the thickness, this would add between \$66,000 and \$88,000 to the project cost. Either alternate still keeps the City within the budgeted CIP improvements. A Change Order for this work will be presented at a future meeting.

City Staff feels that Graniteview Road from 2<sup>nd</sup> Avenue South to the roundabouts is another road that needs improvements. Based on this, they would also like to bring Graniteview Road improvements into discussion for approval. The Graniteview Road improvements right now are estimated to cost between \$120,000 to \$130,000. This exceeds 25% of the base bid, so therefore cannot be approved as a change order. It would have to be bid separately.

Discussion was held on the alternatives. It was determined that 6<sup>th</sup> Avenue from Division Street to First Street South has been improved somewhat with patching and paving with the hotel project and is not one of the major improvements that need to be made at this time. Staff has discussed Old TH 23 with representatives from the Anderson property who would sooner have it stay the same condition versus reclaiming it. They are willing to wait on improvements on this road until the City is ready to pave it. Discussion was also held on approving plans and specs for Graniteview Road and going out for bids and seeing where it comes in at.

Motion by Member Schneider, second by Member Theisen, to award the 2017 Cloud Park and 6<sup>th</sup> Avenue Improvement project, Base Bid to Hardrives, Inc. The motion carried unanimously.

Motion by Mayor Miller, second by Member Theisen, to approve going out for bids on Graniteview Road from 2<sup>nd</sup> Avenue South to the new roundabouts. The motion carried unanimously.

### **5. IMPLEMENTATION OF BODY WORN CAMERA SYSTEM**

The City of Waite Park has been considering the body worn camera system for the Police Department. The City has held the necessary public input sessions required prior to implementation, as well as for policy considerations. Staff has received and presented information from Axon Enterprise that details the cost of implementation including the annual cost for the next 5 years. The cost to implement cameras this year will be \$18,711.00.

Also presented was the draft Portable Recording Systems Policy. The City Council is not required to approve this policy at this Council meeting. Staff provided it to be able to show how the implementation of body worn cameras is proposed to be handled per policy. If the Council chooses to move forward with implementation, Staff will order the cameras and will work with Axon on how the cameras will work. They will then make any modifications to the policy that may be needed once they get a better understanding of the operation of the camera system. The plan would then be to finalize the policy after the City gets the cameras but before cameras are implemented to department personnel.

All necessary statutory requirements have been met for the City to consider the implementation of body worn cameras.

Motion by Member Linquist, second by Member Schulz, to approve the implementation of the body worn camera system as presented. The motion carried unanimously.

**6. COUNCIL/MAYOR**

**6.A. REVIEW AND APPROVE BILLS**

Motion by Member Theisen, second by Member Schulz, to authorize payment of the accounts payable list (0617D2, 0717D1). The motion carried unanimously.

**7. ADMINISTRATOR**

**7.A. UPDATE**

City Administrator Johnson reviewed the following:

- The Coalition of MN Cities Conference is being held in August and Member Schulz will be attending.
- Kwik Trip on 10<sup>th</sup> Avenue North will have their Grand Opening on August 2, 2017 at 2 p.m.
- Member Linquist brought up an issue with parking at Quarry Park. Staff is addressing this issue.

**ADJOURNMENT**

Mayor Miller declared the meeting adjourned at 7:25 p.m.

---

Richard E. Miller  
Mayor

---

Shaunna Johnson  
City Administrator

**Consent Agenda Item B:** Approve Change Order No. 2 to the 2016 Rivers Edge Park Pickleball Courts project.

The attached change order is to extend Final Completion date, replace windscreen with a Douglas fabric, and a compensating change order for this project.

## CHANGE ORDER NO. 2

OWNER	City of Waite Park	DATE	July 27, 2017
CONTRACTOR	Custom Builders, Inc.		
ENGINEER	SEH		
Contract	N/A	OWNER's No.	WAITE 133667
Project	2016 Rivers Edge Park Pickleball Courts, Waite Park, MN		

You are directed to make the following changes in the Contract Documents:

**Description:**

- Extending Final Completion date to 09/015/17 to allow for Contractor to order and install a new wind screen.
- Material change order to have the contractor replace the windscreen with a Douglas fabric in lieu of the existing fabric that has experienced some wind damage. Contractor will install fabric at no cost, as this change order is just paying the difference to increase to a higher quality windscreen.
- This change order also serves as a compensating change order for the project.

ITEM	DESCRIPTION	UNIT	UNIT COST	QUANTITY	AMOUNT
51	MATERIAL COST OF DOUGLAS WINDSCREEN	LUMP SUM	\$4,400.00	1.00	\$4,400.00
	COMPENSATING CHANGE ORDER	LUMP SUM	\$25,016.21	1.00	\$25,016.21
<b>TOTAL</b>					<b>\$29,416.21</b>

**Reason for Change Order:**


- Extend Final Completion date.
- Owner's request for Douglas Windscreen Fabric to be used as the replacement to the original windscreen fabric that was torn in a June storm event.
- Compensating change order.

**Attachments:** Exhibit A.

ITEM	CHANGE IN CONTRACT PRICE	CHANGE IN CONTRACT TIMES	
		Substantial Completion	Ready for Final Payment
Original Contract Price:	\$351,159.25	09/30/16	06/15/17
Net increase (decrease) from previous Change Order No. 1 to 1:	\$21,215.82	No Change	No Change
Contract price prior to the Change Order:	\$372,375.07	No Change	No Change
Net increase (decrease) of this Change Order:	\$25,016.21	No Change	09/15/17
Contract price with all approved Change Orders:	\$401,791.28	09/30/16	09/15/17

In accordance with the Minnesota Uniform Transaction Act, an electronic signature on this document is binding and afforded the same effect as if the document was signed by hand.

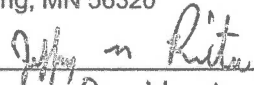
**RECOMMENDED:**

SEH  
 PO Box 1717  
 St. Cloud, MN 56307-1717  
 By:   
 Title: Project Engineer  
 Date: 07/27/17

**APPROVED:**

City of Waite Park  
 PO Box 339  
 Waite Park, MN 56387-0339  
 By: \_\_\_\_\_  
 Title: \_\_\_\_\_  
 Date: \_\_\_\_\_

**ACCEPTED:**

Custom Builders, Inc.  
 12383 234<sup>TH</sup> Street  
 Cold Spring, MN 56320  
 By:   
 Title: President  
 Date: 7/31/17

OWNER  
CONTRACTOR  
SEH

CHANGE ORDER NO. 2 - EXHIBIT A

CONTRACTOR FOR: 2016 RIVERS EDGE PARK PICKLEBALL COURTS

PROJECT NO. WAITE 133667  
OWNER CITY OF WAITE PARK, MN  
CONTRACTOR CUSTOM BUILDERS, INC.

AGREEMENT DATE: 07/18/16

FOR WORK ACCOMPLISHED THROUGH: 07/26/17

ITEM	DESCRIPTION	UNIT	UNIT COST	CONTRACT		THIS PAYMENT		WORK TO DATE		CO #2
				QUANTITY	AMOUNT	QUANTITY	AMOUNT	QUANTITY	AMOUNT	DIFFERENCE
1	MOBILIZATION	LUMP SUM	\$35,000.00	1.00	\$35,000.00	0.05	\$1,750.00	1.00	\$35,000.00	\$0.00
2	TRAFFIC CONTROL	LUMP SUM	\$2,800.00	1.00	\$2,800.00	0.10	\$280.00	1.00	\$2,800.00	\$0.00
3	REMOVE STORM SEWER STRUCTURE	EACH	\$440.00	1.00	\$440.00		\$0.00	1.00	\$440.00	\$0.00
4	REMOVE STORM SEWER PIPE	LIN FT	\$11.00	78.00	\$858.00		\$0.00	78.00	\$858.00	\$0.00
5	CLEARING	TREE	\$165.00	1.00	\$165.00		\$0.00	1.00	\$165.00	\$0.00
6	GRUBBING	TREE	\$110.00	1.00	\$110.00		\$0.00	1.00	\$110.00	\$0.00
7	TRANSPLANT TREE	EACH	\$250.00	9.00	\$2,250.00		\$0.00	11.00	\$2,750.00	\$500.00
8	REMOVE & REPLACE CASTING (W/ NEW CASTING)	EACH	\$495.00	1.00	\$495.00		\$0.00	1.00	\$495.00	\$0.00
9	REMOVE CURB & GUTTER	LIN FT	\$22.00	25.00	\$550.00		\$0.00	25.00	\$550.00	\$0.00
10	REMOVE CONCRETE WALK	SQ FT	\$0.85	2,835.00	\$2,409.75		\$0.00	2,857.00	\$2,428.45	\$18.70
11	BULKHEAD DRAINAGE STRUCTURE	EACH	\$242.00	1.00	\$242.00		\$0.00	1.00	\$242.00	\$0.00
12	COMMON EXCAVATION (P)	CU YD	\$14.30	2,250.00	\$32,175.00		\$0.00	3,650.00	\$52,195.00	\$20,020.00
13	CONTAMINATED MATERIAL EXCAVATION	CU YD	\$5.50	225.00	\$1,237.50		\$0.00	0.00	\$0.00	(\$1,237.50)
14	EXCAVATION SPECIAL (LEAD)	CU YD	\$5.50	225.00	\$1,237.50		\$0.00	0.00	\$0.00	(\$1,237.50)
15	EXCAVATION SPECIAL (LEAD & ASBESTOS)	CU YD	\$5.50	110.00	\$605.00		\$0.00	0.00	\$0.00	(\$605.00)
16	HAUL & DISPOSE OF CONTAMINATED MATERIAL (LEAD)	CU YD	\$11.00	225.00	\$2,475.00		\$0.00	0.00	\$0.00	(\$2,475.00)
17	HAUL & DISPOSE OF CONTAMINATED MATERIAL (LEAD & ASBESTOS)	CU YD	\$11.00	110.00	\$1,210.00		\$0.00	0.00	\$0.00	(\$1,210.00)
18	GRANULAR BORROW (CV)	CU YD	\$9.35	170.00	\$1,589.50		\$0.00	0.00	\$0.00	(\$1,589.50)
19	SELECT GRANULAR BORROW (CV)	CU YD	\$9.90	860.00	\$8,514.00		\$0.00	2,544.00	\$25,185.60	\$16,671.60
20	AGGREGATE BASE CLASS 5	CU YD	\$19.25	520.00	\$10,010.00		\$0.00	520.00	\$10,010.00	\$0.00
21	TYPE SP 9.5 WEARING COURSE MIXTURE (2,C)	TON	\$117.00	390.00	\$45,630.00		\$0.00	372.34	\$43,563.78	(\$2,066.22)
22	BITUMINOUS MATERIAL FOR TACK COAT	GAL	\$4.00	100.00	\$400.00		\$0.00	0.00	\$0.00	(\$400.00)
23	5" CONCRETE WALK W/BEDDING	SQ FT	\$5.25	12,840.00	\$67,410.00		\$0.00	13,456.00	\$70,644.00	\$3,234.00
24	B618 CONCRETE CURB & GUTTER	LIN FT	\$40.00	25.00	\$1,000.00		\$0.00	13.00	\$520.00	(\$480.00)
25	TRUNCATED DOMES	SQ FT	\$50.00	6.00	\$300.00		\$0.00	20.00	\$1,000.00	\$700.00
26	STREET SWEEPER TYPE WET PICKUP	HOUR	\$110.00	5.00	\$550.00		\$0.00	0.00	\$0.00	(\$550.00)
27	CONNECT TO EXISTING STORM SEWER STRUCTURE	EACH	\$1,045.00	1.00	\$1,045.00		\$0.00	1.00	\$1,045.00	\$0.00
28	STORM SEWER STRUCTURE DESIGN H	EACH	\$1,650.00	1.00	\$1,650.00		\$0.00	1.00	\$1,650.00	\$0.00
29	12" RCP CL V STORM SEWER	LIN FT	\$72.00	78.00	\$5,616.00		\$0.00	78.00	\$5,616.00	\$0.00
30	SELECT TOPSOIL BORROW (LV)	CU YD	\$18.50	1,070.00	\$19,795.00		\$0.00	432.00	\$7,992.00	(\$11,803.00)
31	SEEDING W/ FERTILIZER, & BFM HYDRAULIC MATRIX	SQ YD	\$1.29	5,500.00	\$7,095.00		\$0.00	5,500.00	\$7,095.00	\$0.00
32	TEMPORARY SEEDING W/ HYDRAULIC MULCH	SQ YD	\$1.21	5,500.00	\$6,655.00		\$0.00	8,465.00	\$10,242.65	\$3,587.65
33	ROCK CONSTRUCTION ENTRANCE W/ GRIZZLY BARS	EACH	\$1,650.00	1.00	\$1,650.00		\$0.00	0.00	\$0.00	(\$1,650.00)
34	BIOROLL	LIN FT	\$6.60	725.00	\$4,785.00		\$0.00	1,185.00	\$7,821.00	\$3,036.00
35	INLET PROTECTION	EACH	\$220.00	7.00	\$1,540.00		\$0.00	7.00	\$1,540.00	\$0.00
36	48" BLACK VINYL COATED CHAINLINK FENCE	LIN FT	\$16.50	256.00	\$4,224.00		\$0.00	254.00	\$4,191.00	(\$33.00)
37	72" BLACK VINYL COATED CHAINLINK FENCE	LIN FT	\$27.50	270.00	\$7,425.00	27.00	\$742.50	270.00	\$7,425.00	\$0.00
38	96" CHAINLINK FENCE W/ WINDSCREEN	LIN FT	\$44.00	556.00	\$24,464.00		\$0.00	564.00	\$24,816.00	\$352.00
39	4' BLACK VINYL COATE CHAIN LINK GATE - 72" HEIGHT	EACH	\$770.00	6.00	\$4,620.00		\$0.00	6.00	\$4,620.00	\$0.00
40	4' CHAINLINK GATE - 96" HEIGHT W/ WINDSCREEN	EACH	\$1,441.00	2.00	\$2,882.00		\$0.00	2.00	\$2,882.00	\$0.00
41	INSTALL SINGLE POST SHADE STRUCTURE (12x12) (SUPPLIED BY OWNER)	EACH	\$750.00	3.00	\$2,250.00		\$0.00	3.00	\$2,250.00	\$0.00

OWNER  
 CONTRACTOR  
 SEH

CHANGE ORDER NO. 2 - EXHIBIT A

CONTRACTOR FOR: 2016 RIVERS EDGE PARK PICKLEBALL COURTS

PROJECT NO. WAITE 133667  
 OWNER CITY OF WAITE PARK, MN  
 CONTRACTOR CUSTOM BUILDERS, INC.

AGREEMENT DATE: 07/18/16

FOR WORK ACCOMPLISHED THROUGH: 07/26/17

ITEM	DESCRIPTION	UNIT	UNIT COST	CONTRACT		THIS PAYMENT		WORK TO DATE		CO #2 DIFFERENCE
				QUANTITY	AMOUNT	QUANTITY	AMOUNT	QUANTITY	AMOUNT	
42	INSTALL 32 GAL LITTER RECEPTACLE - SURFACE MOUNT (SUPPLIED BY OWNER)	EACH	\$100.00	2.00	\$200.00		\$0.00	2.00	\$200.00	\$0.00
43	INSTALL 8' BACKLESS BENCH - SURFACE MOUNT (SUPPLIED BY OWNER)	EACH	\$100.00	6.00	\$600.00		\$0.00	6.00	\$600.00	\$0.00
44	3" ROUND STEEL NET POLE SLEEVES	EACH	\$200.00	6.00	\$1,200.00		\$0.00	12.00	\$2,400.00	\$1,200.00
45	EDWARDS PICKLEBALL 36" POST SET	EACH	\$600.00	6.00	\$3,600.00	6.00	\$3,600.00	6.00	\$3,600.00	\$0.00
46	EDWARDS PICKLEBALL NET	EACH	\$250.00	6.00	\$1,500.00	6.00	\$1,500.00	6.00	\$1,500.00	\$0.00
47	ACRYLIC SURFACE AND STRIPING	LUMP SUM	\$16,300.00	1.00	\$16,300.00	1.00	\$16,300.00	1.00	\$16,300.00	\$0.00
48	IRRIGATION MODIFICATIONS	LUMP SUM	\$6,200.00	1.00	\$6,200.00		\$0.00	1.00	\$6,200.00	\$0.00
49	IRRIGATION	LUMP SUM	\$6,200.00	1.00	\$6,200.00		\$0.00	1.00	\$6,200.00	\$0.00
<b>TOTAL ITEMS BID</b>					<b>\$351,159.25</b>		<b>\$24,172.50</b>		<b>\$375,142.48</b>	<b>\$23,983.23</b>
<b>CHANGE ORDER NO. 1</b>										
50	12" CONCRETE PERMITER CURB	LIN FT	\$39.73	534.00	\$21,215.82		\$0.00	560.00	\$22,248.80	\$1,032.98
<b>TOTAL CHANGE ORDER NO. 1</b>					<b>\$21,215.82</b>		<b>\$0.00</b>		<b>\$22,248.80</b>	<b>\$1,032.98</b>
<b>CHANGE ORDER NO. 2</b>										
51	MATERIAL COST OF DOUGLAS WINDSCREEN	LUMP SUM	\$4,400.00	1.00	\$4,400.00	1.00	\$4,400.00	1.00	\$4,400.00	\$0.00
<b>TOTAL CHANGE ORDER NO. 2</b>					<b>\$4,400.00</b>		<b>\$4,400.00</b>		<b>\$4,400.00</b>	<b>\$0.00</b>
<b>SUMMARY</b>										
<b>TOTAL ITEMS BID</b>					<b>\$351,159.25</b>		<b>\$24,172.50</b>		<b>\$375,142.48</b>	<b>\$23,983.23</b>
<b>CHANGE ORDER NO. 1</b>					<b>\$21,215.82</b>		<b>\$0.00</b>		<b>\$22,248.80</b>	<b>\$1,032.98</b>
<b>CHANGE ORDER NO. 2</b>					<b>\$4,400.00</b>		<b>\$4,400.00</b>		<b>\$4,400.00</b>	<b>\$0.00</b>
<b>TOTAL</b>					<b>\$376,775.07</b>		<b>\$28,572.50</b>		<b>\$401,791.28</b>	<b>\$25,016.21</b>

**Consent Agenda Item C: Hiring of Firefighters**

Jim Aleshire is recommending the hiring of the following:

Vanessa Bellmont

Becky Zenzen

Nicolaus Schwantes

Michael Griffin

**Consent Agenda Item D:** St. Cloud Youth Hockey Gambling License at Friends Bar

Attached for approval is a Gambling Premise & Permit Application License for St Cloud Youth Hockey. Premises to be Friends Bar, located at 236 2<sup>nd</sup> Avenue South, Waite Park, MN 56387. St Cloud Youth Hockey Gambling Managers criminal background check is in process. All fees have been paid in full and license is pending approval on the background check.

MINNESOTA LAWFUL GAMBLING  
**LG214 Premises Permit Application**

**Annual Fee \$150 (NON-REFUNDABLE)**

**REQUIRED ATTACHMENTS TO LG214**

1. If the premises is leased, attach a copy of your lease. Use **LG215 Lease for Lawful Gambling Activity**.
2. \$150 annual premises permit fee, for each permit (non-refundable). Make check payable to **"State of Minnesota."**

**Mail the application and required attachments to:**  
Minnesota Gambling Control Board  
1711 West County Road B, Suite 300 South  
Roseville, MN 55113

**Questions?** Call 651-539-1900 and ask for Licensing.

**ORGANIZATION INFORMATION**

Organization Name: St. Cloud Youth Hockey Association License Number: 04196

Chief Executive Officer (CEO) Michael Petroske Daytime Phone: \_\_\_\_\_

Gambling Manager: Nicole O'Hotto Daytime Phon: \_\_\_\_\_

**GAMBLING PREMISES INFORMATION**

Current name of site where gambling will be conducted: Friends Bar & Restaurant

List any previous names for this location:  
\_\_\_\_\_  
\_\_\_\_\_

Street address where premises is located: 236 2nd Ave S  
(Do not use a P.O. box number or mailing address.)

City: <b>OR</b> Township:	County:	Zip Code:
<u>Waite Park</u>	<u>Stearns</u>	<u>56303</u>

Does your organization own the building where the gambling will be conducted?  
 Yes  No **If no, attach LG215 Lease for Lawful Gambling Activity.**

A lease is not required if only a raffle will be conducted.  
Is any other organization conducting gambling at this site?  Yes  No  Don't know

Note: Bar bingo can only be conducted at a site where another form of lawful gambling is being conducted by the applying organization or another permitted organization. Electronic games can only be conducted at a site where paper pull-tabs are played.

Has your organization previously conducted gambling at this site?  Yes  No  Don't know

**GAMBLING BANK ACCOUNT INFORMATION; MUST BE IN MINNESOTA**

Bank Name: Bremer Bank Bank Account Number: \_\_\_\_\_

Bank Street Address: 1100 W St. Germain St City: St. Cloud State: **MN** Zip Code: 56301

**ALL TEMPORARY AND PERMANENT OFF-SITE STORAGE SPACES**

Address (Do not use a P.O. box number):	City:	State:	Zip Code:
_____	<u>Sartell</u>	<b>MN</b>	<u>56377</u>
_____	_____	<b>MN</b>	_____
_____	_____	<b>MN</b>	_____

**Consent Agenda Item E:** Resolution for Adoption of the Stearns County All-Hazard Mitigation Plan

Recently the City went through an exercise of reviewing, updating and identifying potential hazards to our community. This review supports our on-going emergency management planning needs. The potential hazards identified for Waite Park will be incorporated into a Stearns County Hazard Mitigation plan. For example, our participation in the County Mitigation plan will help us in the event of an incident/hazard that might make FEMA reimbursement possible in the event of an eligible disaster.

# What is Mitigation?

Mitigation is the effort to reduce loss of life and property by lessening the impact of disasters. In order for mitigation to be effective we need to take action now—before the next disaster—to reduce human and financial consequences later (analyzing risk, reducing risk, and insuring against risk). It is important to know that disasters can happen at any time and any place and if we are not prepared, consequences can be fatal.

Effective mitigation requires that we *all* understand local risks, address the hard choices, and invest in long-term community well-being. Without mitigation actions, we jeopardize our safety, financial security and self-reliance.

- Disasters can happen at anytime and anyplace; their human and financial consequences are hard to predict.
- The number of disasters each year is increasing but only 50% of events trigger Federal assistance.

FEMA – [www.FEMA.gov/what-mitigation](http://www.FEMA.gov/what-mitigation)

<u>Potential Hazards</u>	<u>Frequency</u>	<u>Magnitude</u>	<u>Warning Time</u>	<u>Severity</u>	<u>Special Characteristics</u>	<u>Risk Priority</u>
Tornado	3. Likely	2. Limited	4. Minimal	3. Critical	Mobile Homes	12
Thunderstorm	3. Likely	3. Critical	3. 6-12 hours	2. Limited	Crop Damage Mobile Homes	11
Flooding	2. Possible	2. Limited	1. 24+ hours	2. Limited	Road Washouts Flood Ins	7
Snow	2. Possible	3. Critical	1. 24+ hours	3. Critical		9
Ice Storm	2. Possible	3. Critical	1. 24+ hours	3. Critical		9
Drought	2. Possible	3. Critical	1. 24+ hours	2. Limited	Agricultural	8
Wild Fire	2. Possible	2. Limited	4. Minimal	2. Limited		10
Food Safety	1. Unlikely	1. Negligible	4. Minimal	2. Limited		8
Haz Mat Spills	3. Likely	2. Limited	4. Minimal	3. Critical		12
Water Contamination	2. Possible	2. Limited	4. Minimal	2. Limited		10
Radiological Incident	1. Unlikely	4. Catastrophic	4. Minimal	4. Catastrophic		13
Train Derailments	2. Possible	2. Limited	4. Minimal	3. Critical		11
Civil Unrest	1. Unlikely	2. Limited	2. 12-24 hours	2. Limited		7
Power Outage	3. Likely	3. Critical	4. Minimal	2. Limited	Impacts the Elderly	12
Bio-Terrorism	1. Unlikely	4. Catastrophic	4. Minimal	4. Catastrophic		13
Pandemic	3. Likely	4. Catastrophic	4. Minimal	4. Catastrophic	Emergency Responders sick also	13

Additional information can be found in the Stearns County Hazard Mitigation Plan, published separately.



Waite Park Goals							
Hazard	Goal	Objective(s)	Action Item (s)	Time Frame	Status	Cost	Lead Agency
Severe Summer Storms	Increase community awareness, training, and communications	Increase cooperation between government and private sector  Increase cooperation between jurisdictions and agencies	Send letters to mobile home park managers	Annually	Ongoing	\$500	Waite Park Emergency Management
			Seek out local partners for fund raising efforts				
			Coordinate Skywarn program and Fire Department with Skywarn training				
			Make the Skywarn activation page that FDs receive more specific – area affected, magnitude of event, etc.				
		Increase warning capabilities	Purchase outdoor warning sirens	Annually	Ongoing	\$21,000 – funding could come from a Homeland Security grant	Waite Park Emergency Management
			Distribute more weather radios to businesses, clinics, daycares, etc.				
	Minimize impact to properties due to windstorms	Increase the safety of new and existing structures	Require safe rooms areas in patio homes, require tie downs in ordinances for mobile homes	Annually	Ongoing	\$100	Waite Park Planning and Zoning
	Enhance Public Safety communications	Increase the communication ability of emergency responders	Give emergency responders priority access to cellular telephone service in the event of an emergency in case of cell phone network overload	As needed	Ongoing	Unknown at this time	Waite Park Administrator
			Acquire a mobile communication trailer				
			Purchase 800 MHz radios for fire, police and street departments				
Provide fire departments with accurate listings of available resources		Create comprehensive resource list for all FDs in the area showing all equipment available (a "flip chart"), maintain the list on a regular basis	Completed				
Develop storm shelters	Provide shelters for bad weather	Ensure safety of people	2-5 years	Ongoing	Unknown at this time	Waite Park Planning	
	Provide storm shelters for community parks and patio homes additions	Find funding to get shelters built	2-5 years	Ongoing	\$500,000	Waite Park Emergency Management Director	
Hazardous Materials	Minimize impact to population living near hazmat sites	Increase local resources for responding to hazmat situation	Encourage local fire departments to undertake hazmat training	Annually	Ongoing	\$2,500 – funding could come from the State Homeland Security and Emergency Management Grant	Waite Park Emergency Management
			Identify and contact local personnel who are trained in hazmat issues, develop cooperative relationship				
			Increase the number of hazardous material				

			exercises throughout the County				
	Minimize impact to population living near hazmat sites	Reduce the number of residential, commercial and vulnerable populations residing within one-mile of a hazardous material facility or transportation corridor	Developing and enforcing all-hazards building codes	Annually	Ongoing	Staff Time	Waite Park Emergency Management and Fire Department
			Mitigation should be incorporated into land use management plans				
Hazardous Materials	Prepare the city in the event of a Hazardous Material incident	Increase public awareness	Public service announcements in radio, newspaper explaining warnings and procedures (mailings? Utilize coops in disseminating information)	Annually	Ongoing	Under \$500	Waite Park Emergency Management and Fire Department
			Door to door leaflets handed out by Boy Scouts or other volunteers				
		Train police, fire and city hall personnel to work as a coordinated team, in conjunction with our local municipal, County and State officials, to effectively respond to and mitigated damage from a potential Hazardous Materials spill	Conduct bi-annually training including table top exercises and response drills to simulate a hazardous spill that may occur on a rail system or by motorized carrier	2-5 years	New	\$1,000	Stearns County Emergency Management
			Training would include training with the St. Cloud Fire Department Hazmat team and refresh on Hazmat awareness				
Flood	Improve flood prevention strategies	Ensure that FEMA floodplain data is accurate and up to date	Conduct local floodplain survey	As needed	Ongoing	\$1,000	Stearns County Environmental Services, City of Waite Park and Waite Park Planning and Zoning
		Have all homes in the floodplain have flood insurance	Promote flood insurance through local insurance agents	Every Spring	Ongoing	None	Local Insurance Agencies
Winter Storms	Minimize outage time and occurrence	Increase local power generation capabilities	Acquire portable generators with universal mountings	Annually	Ongoing	Responsibility of local business, schools and municipal government \$20,000-\$50,000 per unit	Waite Park Emergency Management
			Create and maintain list of cities' power generation capabilities such as portable generators available to the city				
		Try to ensure local power redundancy	Communities pass an ordinance that states they will bury all above ground electrical utilities	Apply after every presidential disaster declaration for an affected	Ongoing	Dependent on size of community	Stearns County Municipalities and Public Utilities
Increase reliability of electrical utilities	Bury above ground electrical utilities						

				community			
Water Contamination	Protect water source	Prevent water contamination by an outside threat	Do not allow unauthorized personnel access to your facilities	Immediately	Ongoing	Staff Time and alarm system cost of \$10,000-\$50,000	Municipal Water Treatment facilities
			Ensure that chemical manufacturer and delivery companies have a Quality Assurance/Quality Control program				
			Check all deliveries to ensure they are the chemicals that were ordered				
	Prevent water contamination by an inside threat	Perform a thorough check of employee credentials	Immediately	Ongoing	Depends on type of security system used	Municipal Water Treatment facilities	
Secure access to remote chemical addition points							
Consider deploying a user authentication method such as one-time passwords, smart cards or biometric ID's							
Protect the communities well heads	Provide physical security to all well head sites	Build a fence around the well heads	2-5 years	New	\$50,000	Public Works	
Active Threat	Prepare the city in the event of an active threat or terrorism incident in either a school or business setting	To prepare police, fire and city hall personnel to work as a coordinated team, in conjunction with our local municipal, County and State officials, to effectively respond to and mitigated damage from an active threat incident	Conduct bi-annual training including table top exercises and response drills for various active threat situations.	2-5 years	New	\$2,500	Stearns County Emergency Management
			Training would be conducted in participation with other local police and fire agencies without our mutual aid district in addition to Stearns County Emergency Management				

**RESOLUTION NO. 080717-  
CITY OF WAITE PARK**

**RESOLUTION ADOPTING THE STEARNS COUNTY ALL-HAZARD MITIGATION PLAN**

WHEREAS, the City of Waite Park has participated in the hazard mitigation planning process as established under the Disaster Mitigation Act of 2000, and

WHEREAS, the Act establishes a framework for the development of a multi-jurisdictional County Hazard Mitigation Plan; and

WHEREAS, the Act as part of the planning process requires public involvement and local coordination among neighboring local units of government and businesses; and

WHEREAS, the Stearns County Plan includes a risk assessment including past hazards, hazards that threaten the County, an estimate of structures at risk, a general description of land uses and development trends; and

WHEREAS, the Stearns County Plan includes a mitigation strategy including goals and objectives and an action plan identifying specific mitigation projects and costs; and

WHEREAS, the Stearns County Plan includes a maintenance or implementation process including plan updates, integration of the plan into other planning documents and how Stearns County will maintain public participation and coordination; and

WHEREAS, the Plan has been shared with the Minnesota Division of Homeland Security and Emergency Management and the Federal Emergency Management Agency for review and comment; and

WHEREAS, the Stearns County All-Hazard Mitigation Plan will make the county and participating jurisdictions eligible to receive FEMA hazard mitigation assistance grants; and

WHEREAS, this is a multi-jurisdictional Plan and cities that participated in the planning process may choose to also adopt the County Plan.

NOW THEREFORE BE IT RESOLVED that the City of Waite Park supports the hazard mitigation planning effort and wishes to adopt the Stearns County All-Hazard Mitigation Plan

Adopted by the City Council this 7<sup>th</sup> day of August 2017.

\_\_\_\_\_  
Shaunna Johnson  
City Administrator-Clerk-Treasurer

\_\_\_\_\_  
Richard E. Miller  
Mayor

**ACTION ON THIS RESOLUTION:**

Motion for adoption:  
Seconded by:  
Voted in favor of:  
Voted against:  
Abstained:  
Absent:  
Resolution adopted.

I hereby certify that the foregoing is a true and correct copy of a resolution adopted by the Waite Park City Council at a duly authorized meeting held on 8/7/17.

---

Shaunna Johnson  
City Administrator-Clerk-Treasurer

**Consent Agenda Item F: Change Order for Public Works Building**

Please see attached memo.



# OERTEL ARCHITECTS

1795 ST. CLAIR AVENUE ST. PAUL, MINNESOTA 55105

TEL: 651-696-5186

www.oertelarchitects.com

DATE: August 3, 2017  
TO: City of Waite Park  
FROM: Oertel Architects  
RE: Project Number #15-29 Public Works Facility  
Change Order #04

## MEMORANDUM

Change Order #04 modified the following scope of the contract:

COP #23: Added cable management for racking in the I.T. room. The total cost associated with the revised scope of work is: \$ 668.00.

COP #24: Extended size of concrete pad on grade at fuel island area. The total cost associated with the revised scope of work is: \$ 3,516.00.

COP #25: Added (2) bollards in Vehicle Storage area. The total cost associated with the revised scope of work is: \$ 953.00.

COP #26: Added safety/warning horn for overhead bridge crane. The total cost associated with the revised scope of work is: \$ 1,834.00.

COP #27: Modified ductwork from RTU to Utility Shop. The total cost associated with the revised scope of work is: \$ 4,030.00.

COP #28: Added installation of (4) bollards, (2) at transformer and (2) at parking signs. The total cost associated with the revised scope of work is: \$ 670.00.

COP #29: Omitted light kits at Large Vehicle Lift. The total credit associated with the revised scope of work is: (-) \$ 1,671.00.

COP #30: Revised location / route of storm sewer lines, near Fuel Island. The total cost associated with the revised scope of work is: \$ 341.00.

COP #31: Upgraded (3) refrigerators. The total cost associated with the revised scope of work is: \$ 180.00.

PR #31R: Modified exterior signage at office area and at monument sign. The total cost associated with the revised scope of work is: \$ 9,654.00.

PR #45R: Revised locations for various hose reels and associated piping. The total cost associated with the revised scope of work is: \$ 4,046.00.



# OERTEL ARCHITECTS

1795 ST. CLAIR AVENUE ST. PAUL, MINNESOTA 55105

---

TEL: 651-696-5186

[www.oertelarchitects.com](http://www.oertelarchitects.com)

PR #46: Added exterior lighting at office area (west elevation). The total cost associated with the revised scope of work is: \$ 1,560.00.

PR #47: Extended bituminous paving and associated curb and gutter adjacent to Salt Storage structure. The total cost associated with the revised scope of work is: \$ 507.00.

PR #48: Modified hardware at door 122A. The total cost associated with the revised scope of work is: \$ 2,487.00.

PR #49: Added cabinets / casework to the Kitchen area. The total cost associated with the revised scope of work is: \$ 12,505.00.

**Total net change (cost) of Change Order #03 is: (+) \$41,280.00.**

The costs associated with this Change Order have been reviewed by Oertel Architects and determined to be consistent with prices received for similar items on other projects.

# **AIA<sup>®</sup> Document G701<sup>™</sup> – 2001**

## Change Order

<b>PROJECT:</b> <i>(Name and address)</i> Waite Park Public Works 670 17th Ave. S., Waite Park	<b>CHANGE ORDER NUMBER:</b> 004  <b>DATE:</b> August 3, 2017  <b>ARCHITECT'S PROJECT NUMBER:</b> 15-29	OWNER <input type="checkbox"/>  ARCHITECT <input type="checkbox"/>  CONTRACTOR <input type="checkbox"/>  FIELD <input type="checkbox"/>  OTHER <input type="checkbox"/>
<b>TO CONTRACTOR:</b> <i>(Name and address)</i> Kue Contractors, Inc. 130 Central Ave. S. Watkins, MN 55389	<b>CONTRACT DATE:</b> August 24, 2016  <b>CONTRACT FOR:</b> General Construction	

The Contract is changed as follows:  
*(Include, where applicable, any undisputed amount attributable to previously executed Construction Change Directives.)*

Included modifications as outlined in the attached Change Order #04 Memorandum, dated August 3, 2017.  
 Includes changes as outlined in: COP #23, COP #24, COP #25, COP #26, COP #27, COP #28, COP #29, COP #30,  
 COP #31, PR #31R, PR #45R, PR #46, PR #47, PR #48, PR #49.  
 Total net change (cost) of Change Order #04 is: (+) \$41,280.00.

The original	Contract Sum	was		\$	7,812,512.00
The net change by previously authorized Change Orders				\$	140,808.00
The	Contract Sum	prior to this Change Order was		\$	7,953,320.00
The	Contract Sum	will be increased by this Change Order in the amount of		\$	41,280.00
The new	Contract Sum	, including this Change Order, will be		\$	7,994,600.00

The Contract Time will be unchanged by ( ) days.

The date of Substantial Completion as of the date of this Change Order, therefore, is unchanged.

*(NOTE: This Change Order does not include changes in the Contract Sum, Contract Time or Guaranteed Maximum Price that have been authorized by Construction Change Directive until the cost and time have been agreed upon by both the Owner and Contractor, in which case a Change Order is executed to supersede the Construction Change Directive.)*

**NOT VALID UNTIL SIGNED BY THE ARCHITECT, CONTRACTOR AND OWNER.**

<u>Oertel Architects</u> ARCHITECT <i>(Firm name)</i>  1795 St. Clair Avenue St. Paul, MN. 55105 ADDRESS  BY <i>(Signature)</i>  Jeffrey L. Oertel (Typed name)  August 3, 2017 DATE	<u>Kue Contractors, Inc.</u> CONTRACTOR <i>(Firm name)</i>  130 Central Ave. S. Watkins, MN. 55389 ADDRESS  BY <i>(Signature)</i>  Jay D. Kuechle (Typed name)  August 3, 2017 DATE	<u>City of Waite Park</u> OWNER <i>(Firm name)</i>  19 13th Ave. N. Waite Park, MN. 56387 ADDRESS  BY <i>(Signature)</i>  (Typed name)  DATE
--	---	---

**Agenda Item No. 2**

**Issue:** Approve Plans and Specifications for the 2017 Granite View Road Overlay Improvements

---

**BACKGROUND:**

This project includes a 2-inch bituminous overlay of Granite View Road. Attached are representative Plan Sheets and a Project Cost Estimate for your review.

**REQUIRED ACTION:**

Motion to approve the Plans and Specifications and authorize advertising for bids for the 2017 Granite View Road Improvement project.

**RECOMMENDED ACTION:**

Approve.

**SUGGESTED MOTION:**

Council member \_\_\_\_\_ moved to approve the Plans and Specifications for the 2017 Granite View Road Improvement project as presented OR with the following revisions/corrections/ additions: \_\_\_\_\_

---

---

Council member \_\_\_\_\_ seconded the motion.

**ROLL CALL**

Councilmember Charles Schneider \_\_\_\_\_  
Councilmember Vic Schulz \_\_\_\_\_  
Councilmember Mike Linquist \_\_\_\_\_  
Councilmember Frank Theisen \_\_\_\_\_  
Mayor Richard E. Miller \_\_\_\_\_

Motion (Approved) (Denied)



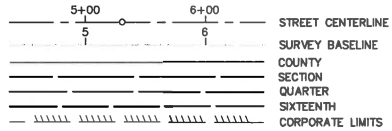
2017-2018 GRANITE VIEW ROAD IMPROVEMENTS  
 WAITE PARK, MN  
 SEH NO. WAITE 142954

08/02/17

ITEM NO.	ITEM DESCRIPTION	UNIT OF MEASUREMENT	APPROXIMATE QUANTITY	UNIT PRICE	TOTAL
1	MOBILIZATION	LUMP SUM	1.00	\$7,000.00	\$7,000.00
2	TRAFFIC CONTROL	LUMP SUM	1.00	\$5,000.00	\$5,000.00
3	INLET PROTECTION	EACH	1.00	\$200.00	\$200.00
4	SAWING BITUMINOUS PAVEMENT	LIN FT	76.00	\$3.00	\$228.00
5	REMOVE BITUMINOUS PAVEMENT	SQ YD	36.00	\$3.00	\$108.00
6	ADJUST VALVE BOX	EACH	2.00	\$200.00	\$400.00
7	AGGREGATE SHOULDERING	LIN FT	8,882.00	\$1.00	\$8,882.00
8	MILLED TRANSITION (EACH END)	SQ YD	421.00	\$3.00	\$1,263.00
9	TYPE SP 9.5 WEAR COURSE MIX (3,C)	TON	1,540.00	\$65.00	\$100,100.00
10	BITUMINOUS MATERIAL FOR TACK COAT	GAL	645.00	\$2.00	\$1,290.00
11	FULL DEPTH STREET RESTORATION	SQ YD	385.00	\$25.00	\$9,625.00
12	BITUMINOUS DRIVEWAY RESTORATION	SQ YD	36.00	\$20.00	\$720.00
13	STREET SWEEPING TYPE WET PICKUP	HOUR	2.00	\$115.00	\$230.00
14	4" SOLID LINE WHITE - EPOXY	LIN FT	8,890.00	\$0.40	\$3,556.00
15	4" BREAK LINE YELLOW - EPOXY	LIN FT	810.00	\$0.50	\$405.00
16	4" SOLID LINE YELLOW - EPOXY	LIN FT	961.00	\$0.40	\$384.40
17	4" DOUBLE SOLID LINE YELLOW - EPOXY	LIN FT	646.00	\$0.60	\$387.60
<b>SUBTOTAL - CONSTRUCTION</b>					<b>\$139,779.00</b>
ENGINEERING					\$16,773.48
CONTINGENCY (5%)					\$6,988.95
<b>TOTAL</b>					<b>\$163,541.43</b>

C:\Users\jhalter\AppData\Local\Temp\1\notesFB2954\WP142954\_Estimate.xlsx\Estimate\_All

**LEGEND**



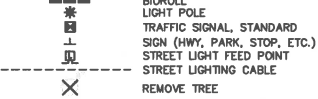
**EXISTING**

- RIGHT OF WAY
- PERMANENT EASEMENT
- PROPERTY LINE
- R.R. RIGHT OF WAY
- SANITARY SEWER AND MANHOLE
- FORCE MAIN
- SANITARY SEWER SERVICE & CLEANOUT
- WATER MAIN, HYDRANT AND VALVE
- WATER SERVICE AND CURB STOP BOX
- WATER VALVE MANHOLE
- STORM SEWER, APRON, MANHOLE AND CATCH BASIN
- CULVERT
- BULKHEAD
- BURIED FIBER OPTIC CABLE
- BURIED FIBER OPTIC DUCT OR CONDUIT
- BURIED PHONE CABLE AND PEDESTAL
- BURIED PHONE DUCT OR CONDUIT AND MANHOLE
- BURIED TV CABLE AND PEDESTAL
- BURIED ELECTRIC CABLE
- BURIED ELECTRIC DUCT OR CONDUIT AND MANHOLE
- OVERHEAD ELECTRIC, POLE AND DOWN GUY ANCHOR
- LIGHT POLE
- TRAFFIC SIGNAL STANDARD
- GAS MAIN
- GAS SIGN, VALVE AND VENT
- PETROLEUM PIPELINE
- SOIL BORING
- TRAVERSE POINT
- CONCRETE CURB AND GUTTER
- EXISTING PAVEMENT OR SIDEWALK
- SIGN (HWY, PARK, STOP, ETC.)
- STREET NAME SIGN
- DITCH
- RAILROAD TRACKS
- FENCE (UNIDENTIFIED)
- BARBED WIRE FENCE
- CHAIN LINK FENCE
- ELECTRIC WIRE FENCE
- WOOD FENCE
- WOVEN WIRE FENCE
- PLATE BEAM GUARDRAIL
- CABLE GUARDRAIL

- DECIDUOUS AND CONIFEROUS TREE
- BUSH-SHRUB
- WOODED AREA
- WETLAND
- BUILDING

**PROPOSED**

- NEW RIGHT OF WAY
- PERMANENT EASEMENT
- TEMPORARY EASEMENT
- SANITARY SEWER AND MANHOLE
- FORCE MAIN
- SANITARY SEWER SERVICE & CLEANOUT
- WATER MAIN, HYDRANT AND VALVE
- WATER SERVICE AND CURB STOP BOX
- WATER VALVE MANHOLE
- STORM SEWER, MANHOLE AND CATCH BASIN
- CULVERT
- BULKHEAD
- DRAIN PIPE
- DITCH
- CONCRETE CURB AND GUTTER
- SILT FENCE
- FLOTATION SILT CURTAIN
- BIOROLL
- LIGHT POLE
- TRAFFIC SIGNAL, STANDARD
- SIGN (HWY, PARK, STOP, ETC.)
- STREET LIGHT FEED POINT
- STREET LIGHTING CABLE

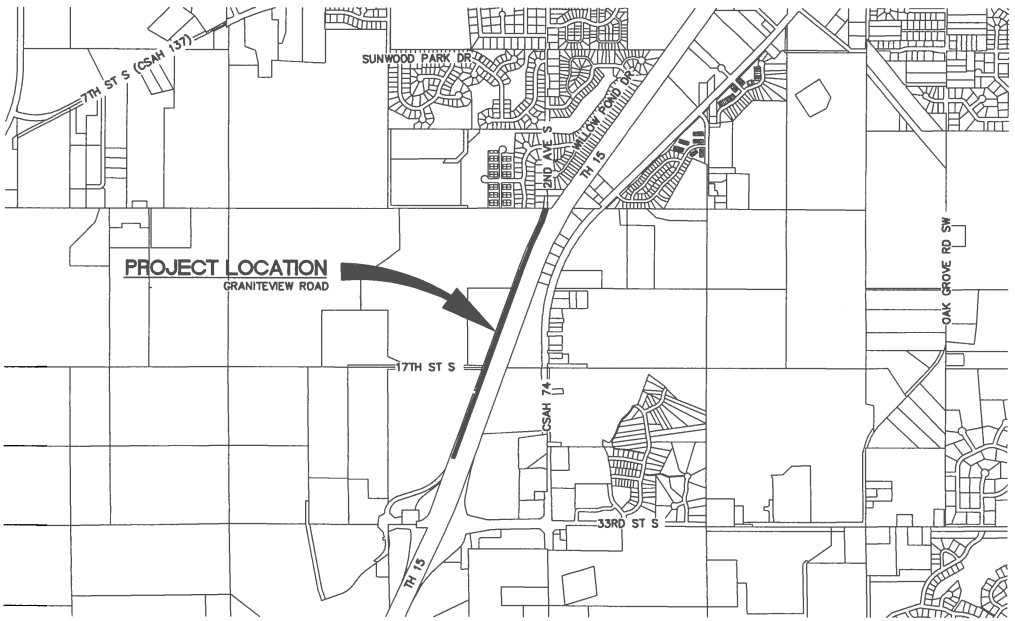


# CITY OF WAITE PARK, MINNESOTA

## CONSTRUCTION PLANS FOR

### MILL AND OVERLAY BITUMINOUS SURFACE 2017 - 2018 GRANITEVIEW ROAD IMPROVEMENTS

CITY PROJECT NO. WAITE 142954



NO.	BY	DATE	REVISIONS

NOTE:  
THE SUBSURFACE UTILITY QUALITY INFORMATION IN THIS PLAN IS LEVEL D.  
THIS UTILITY QUALITY LEVEL WAS DETERMINED ACCORDING TO THE  
GUIDELINES OF CI/ASCE 38-02 ENTITLED "STANDARD GUIDELINES FOR THE  
COLLECTION AND DEPICTION OF EXISTING SUBSURFACE UTILITY DATA."

THE CONTRACTOR SHALL CALL THE GOPHER STATE ONE CALL SYSTEM AT  
811 BEFORE COMMENCING EXCAVATION.



Know what's below.  
Call before you dig.

**GOVERNING SPECIFICATIONS**  
THE 2016 EDITION OF THE MINNESOTA DEPARTMENT OF TRANSPORTATION  
"STANDARD SPECIFICATIONS FOR CONSTRUCTION" SHALL GOVERN EXCEPT  
AS MODIFIED BY THE SPECIFICATIONS FOR THIS PROJECT.

ALL TRAFFIC CONTROL DEVICES AND SIGNING SHALL CONFORM  
TO THE MUTCD, INCLUDING FIELD MANUAL FOR TEMPORARY  
TRAFFIC CONTROL ZONE LAYOUTS, - CURRENT EDITION.

**INDEX**

SHEET NO.	DESCRIPTION
1	TITLE SHEET
2	TYPICAL SECTIONS
3-5	STREET IMPROVEMENT PLAN

THIS PLAN CONTAINS 5 SHEETS.

**CITY OFFICIALS**

- MAYOR \_\_\_\_\_ RICHARD MILLER
- CITY ADMINISTRATOR \_\_\_\_\_ SHAUNNA JOHNSON
- PUBLIC WORKS DIRECTOR \_\_\_\_\_ BILL SCHLUENZ
- COUNCIL \_\_\_\_\_ VIC SCHULZ
- \_\_\_\_\_ MIKE LINQUIST
- \_\_\_\_\_ CHUCK SCHNEIDER
- \_\_\_\_\_ FRANK THEISEN

**PROJECT LOCATION**



**WAITE PARK, MINNESOTA**

PHONE: 320.229.4300  
1200 25TH AVENUE SOUTH  
P.O. BOX 1717  
ST. CLOUD, MN 56302-1717  
www.sehinc.com

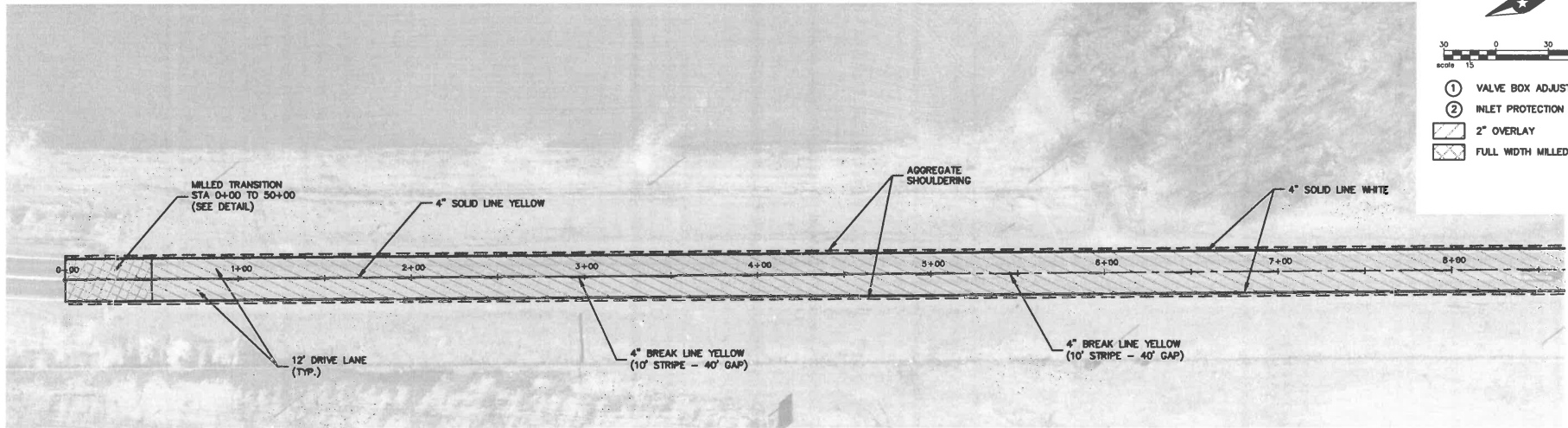
I HEREBY CERTIFY THAT THIS PLAN WAS PREPARED BY ME OR UNDER  
MY DIRECT SUPERVISION AND THAT I AM A DULY LICENSED  
PROFESSIONAL ENGINEER UNDER THE LAWS OF THE STATE OF  
MINNESOTA.

Signature: *Terrence S. Notzka* TERRENCE S. NOTZKA, P.E.  
Date: 05/05/2017 Lic. No. 18566

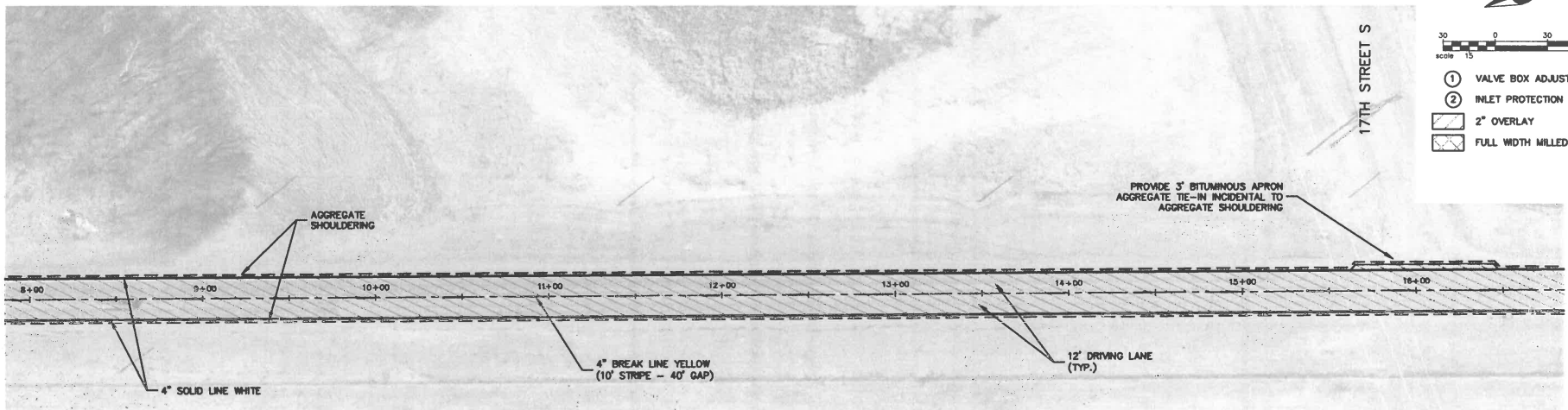
FILE NO. WAITE142954
1
5

P:\UA\W\WAITE\142954\3-mill-ovr\17-18-graniteview\17-18-graniteview.dwg 8/2/2017 1:36 PM jgriffith





**GRANITE VIEW ROAD**



- ① VALVE BOX ADJUSTMENT
- ② INLET PROTECTION
- ▨ 2" OVERLAY
- ▨ FULL WIDTH MILLED TAPER

- ① VALVE BOX ADJUSTMENT
- ② INLET PROTECTION
- ▨ 2" OVERLAY
- ▨ FULL WIDTH MILLED TAPER

P:\UZ\VA\WAITE\42854\3--road--sign\31--drawing\10--Civil\road\img\plan\h1a\wp\42854.dwg 8/2/2017 2:48 PM jgriffith

DRAWN BY: JRG				
DESIGNER: JRG				
CHECKED BY: JMH				
DESIGN TEAM	NO.	BY	DATE	REVISIONS

I HEREBY CERTIFY THAT THIS PLAN WAS PREPARED BY ME OR UNDER MY DIRECT SUPERVISION AND THAT I AM A DULY LICENSED PROFESSIONAL ENGINEER UNDER THE LAWS OF THE STATE OF MINNESOTA.

*Terrence S. Wotzka*  
 Date: 06/05/2017      TERRENCE S. WOTZKA, PE      Lic. No. 18566

PHONE: 320.228.4300  
 1200 23TH AVENUE SOUTH  
 P.O. BOX 1717  
 ST. CLOUD, MN 56302-1717  
 www.sehinc.com

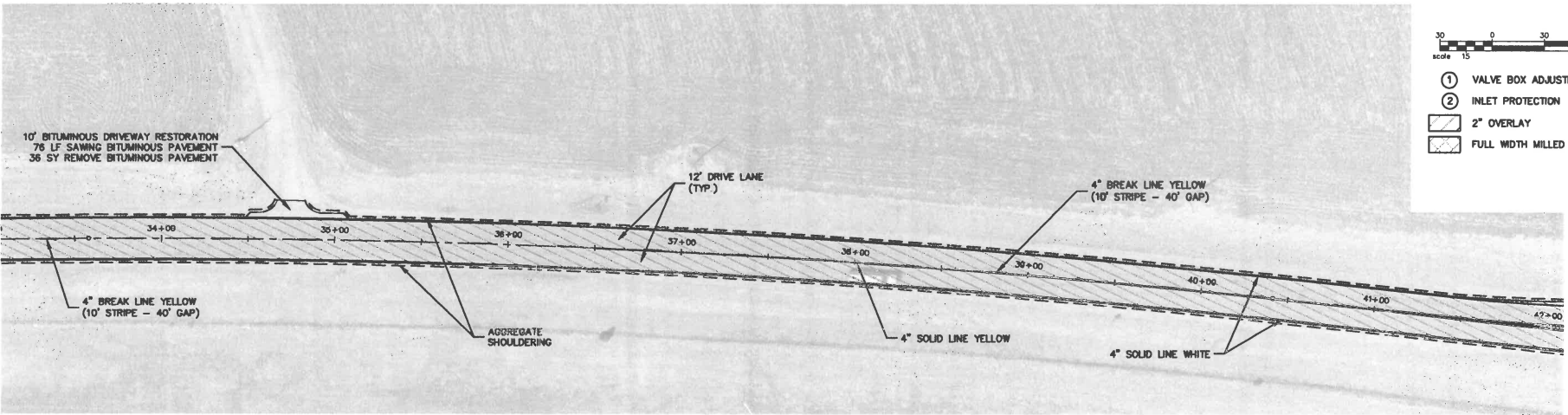
**2017 - 2018 GRANITEVIEW ROAD IMPROVEMENTS**  
**WAITE PARK, MINNESOTA**

**GRANITE VIEW ROAD STREET IMPROVEMENTS**

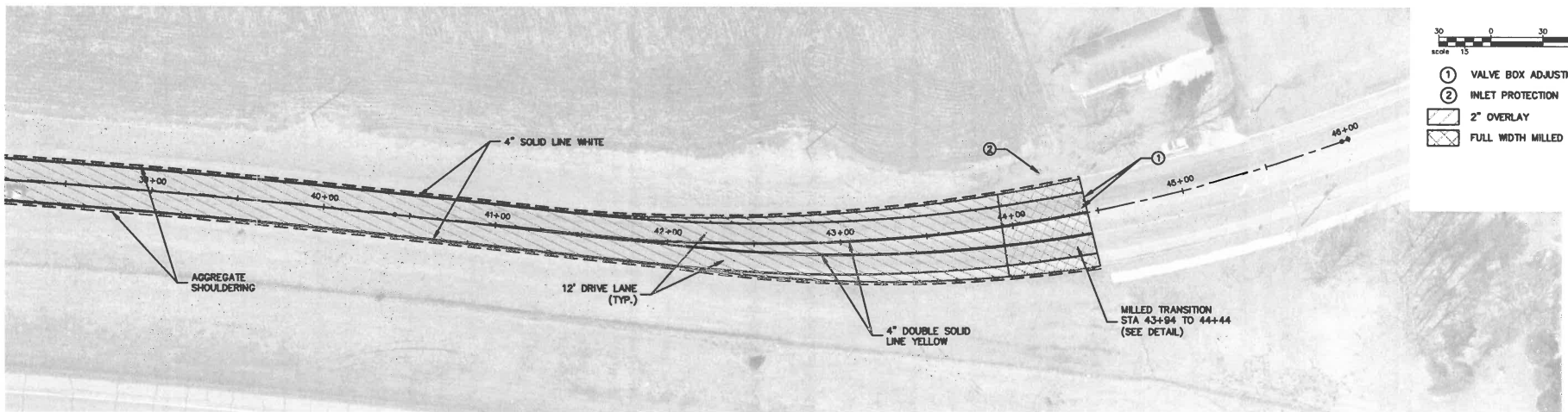
FILE NO. WAITE142854

**3**  
**12**





GRANITE VIEW ROAD



P:\UZ\W\VAITE\42954\5 - final - design\51 - drawings\10 - Civil\Road\Vaite\42954.dwg 8/2/2017 2:48 PM jpriffith

DRAWN BY:	JRG			
DESIGNER:	JRG			
CHECKED BY:	JRH			
DESIGN TEAM	NO.	BY	DATE	REVISIONS

I HEREBY CERTIFY THAT THIS PLAN WAS PREPARED BY ME OR UNDER MY DIRECT SUPERVISION AND THAT I AM A DULY LICENSED PROFESSIONAL ENGINEER UNDER THE LAWS OF THE STATE OF MINNESOTA.

*Terrence S. Witzka*  
 Date: 08/05/2017  
 TERRENCE S. WITZKA, PE  
 Lic. No. 18568

**SEH**  
 PHONE: 320.228.4300  
 1200 25TH AVENUE SOUTH  
 P.O. BOX 1717  
 ST. CLOUD, MN 56302-1717  
 www.sehinc.com

**2017 - 2018 GRANITEVIEW ROAD IMPROVEMENTS WAITE PARK, MINNESOTA**

**GRANITE VIEW ROAD STREET IMPROVEMENTS**

FILE NO.  
WAITE142954

**5**  
**12**

**Agenda Item No. 3**

Issue: Council/Mayor: Review and Approve Bills, Other Business

---

Councilmember \_\_\_\_\_ moved to approve bills as presented.

Councilmember \_\_\_\_\_ seconded the motion.

**ROLL CALL**

Councilmember Michael Linquist	_____
Councilmember Charles Schneider	_____
Councilmember Vic Schulz	_____
Councilmember Frank Theisen	_____
Mayor Richard Miller	_____

Motion (Approved) (Denied)

ACS FINANCIAL SYSTEM  
07/19/2017 10:28:24

Schedule of Bills

CITY OF WAITE PARK  
GL050S-V08.05 COVERPAGE  
GL540R

Report Selection:

RUN GROUP... 0417M1 COMMENT... 0417 MANUAL DISBURSEMENT

DATA-JE-ID DATA COMMENT  
-----

M-04302017-046 0417 MANUAL DISBURSEMENT

Run Instructions:

Jobq	Banner	Copies	Form	Printer	Hold	Space	LPI	Lines	CPI	CP	SP	RT
L		01			N	S	6	066	10			

Schedule of Bills

VENDOR NAME DESCRIPTION	AMOUNT	ACCOUNT NAME	FUND & ACCOUNT	CLAIM	INVOICE	PO#	F/P ID LINE
DARREL NEMETH INC 0317 ELECTRIC INSPECTION	1,239.30	FEES PAID TO ELECTRICAL	101.4140.4080		033117		046 00021
MN DEPT OF REVENUE II							
0317 COPIES SALES TAX	0.17	REMITTANCE REV COL OTHER	101.4051.8100		0317		046 00012
0317 WATER METER S TAX	62.28	REMITTANCE REV COL OTHER	703.4825.8100		0317		046 00013
0317 MXU SALES TAX	10.44	REMITTANCE REV COL OTHER	703.4825.8100		0317		046 00014
0317 PARK RENT S TAX	36.84	REMITTANCE REV COL OTHER	101.4552.8100		0317		046 00015
0317 YARD WASTE CD S TAX	0.45	REMITTANCE REV COL OTHER	101.4051.8100		0317		046 00016
0317 WATER SALES TAX	17.82	REMITTANCE REV COL OTHER	703.4825.8100		0317		046 00017
	128.00	*VENDOR TOTAL					
PLAZA PARK BANK 0417 ACH FEE	35.00	FEES FOR WIRE TRANSFERS	101.4051.4440		042617		046 00018
POSTMASTER (WAITE PARK)							
0417 UB POSTAGE WTR	304.42	OFFICE SUPPLIES/POSTAGE	703.4825.2000		042017		046 00019
0417 UB POSTAGE SWR	304.42	OFFICE SUPPLIES/POSTAGE	709.4843.2000		042017		046 00020
	608.84	*VENDOR TOTAL					
SELECT ACCOUNT							
0417 HSA CITY CONTRIB CL	2,291.76	HOSPITALIZATION INSURANC	101.4051.1500		0417		046 00001
0417 HSA CITY CONTRIB PL	532.97	HOSPITALIZATION INSURANC	101.4091.1500		0417		046 00002
0417 HSA CITY CONTRIB CH	266.49	HOSPITALIZATION INSURANC	101.4094.1500		0417		046 00003
0417 HSA CITY CONTRIB PD	10,153.08	HOSPITALIZATION INSURANC	101.4110.1500		0417		046 00004
0417 HSA CITY CONTRIB BI	532.97	HOSPITALIZATION INSURANC	101.4140.1500		0417		046 00005
0417 HSA CITY CONTRIB PW	2,979.26	HOSPITALIZATION INSURANC	101.4212.1500		0417		046 00006
0417 HSA CITY CONTRIB SN	564.98	HOSPITALIZATION INSURANC	101.4213.1500		0417		046 00007
0417 HSA CITY CONTRIB SS	159.90	HOSPITALIZATION INSURANC	715.4224.1500		0417		046 00008
0417 HSA CITY CONTRIB PK	751.47	HOSPITALIZATION INSURANC	101.4552.1500		0417		046 00009
0417 HSA CITY CONTRIB WT	1,502.98	HOSPITALIZATION INSURANC	703.4825.1500		0417		046 00010
0417 HSA CITY CONTRIB SW	1,049.97	HOSPITALIZATION INSURANC	709.4843.1500		0417		046 00011
	20,785.83	*VENDOR TOTAL					

ACS FINANCIAL SYSTEM  
07/19/2017 10:28:25

Schedule of Bills

CITY OF WAITE PARK  
GL540R-V08.05 PAGE 2

VENDOR NAME	AMOUNT	ACCOUNT NAME	FUND & ACCOUNT	CLAIM	INVOICE	PO#	F/P ID LINE
DESCRIPTION							
REPORT TOTALS:	22,796.97						

RECORDS PRINTED - 000021

Schedule of Bills

FUND RECAP:

FUND	DESCRIPTION	DISBURSEMENTS
101	GENERAL FUND	19,384.74
703	WATER FUND	1,897.94
709	SEWER FUND	1,354.39
715	STORMWATER FUND	159.90
TOTAL ALL FUNDS		22,796.97

BANK RECAP:

BANK	NAME	DISBURSEMENTS
CHEK	PLAZA PARK BANK	22,796.97
TOTAL ALL BANKS		22,796.97

THE PRECEDING LIST OF BILLS PAYABLE WAS REVIEWED AND APPROVED FOR PAYMENT.

DATE ..... APPROVED BY .....  
.....  
.....

ACS FINANCIAL SYSTEM  
07/19/2017 10:59:48

Schedule of Bills

CITY OF WAITE PARK  
GL050S-V08.05 COVERPAGE  
GL540R

Report Selection:

RUN GROUP... 0417M2 COMMENT... 0417 SR CTR DISBURSEMENT

DATA-JE-ID DATA COMMENT  
-----

M-04302017-047 0417 SR CTR DISBURSEMENT

Run Instructions:

Jobq	Banner	Copies	Form	Printer	Hold	Space	LPI	Lines	CPI	CP	SP	RT
L		01			N	S	6	066	10			

Schedule of Bills

VENDOR NAME DESCRIPTION	AMOUNT	ACCOUNT NAME	FUND & ACCOUNT	CLAIM	INVOICE	PO#	F/P ID LINE
CARD SERVICES FRUIT - SENIOR CENTER	7.98	EXPENSES APPROVED BY COU	603.4825.4451		M70913816	000591 P	047 00003
INNOVATIVE OFFICE SOLUTI BULLETIN BD RAILS-SR CTR	35.68	EXPENSES APPROVED BY COU	603.4825.4451		IN1551697	000590 P	047 00001
SAM'S CLUB/SYNCHRONY BAN TABLE/FOOD/ETC-SR CTR	206.76	EXPENSES APPROVED BY COU	603.4825.4451		80002T002WDDPS	000592 P	047 00002

ACS FINANCIAL SYSTEM  
07/19/2017 10:59:48

Schedule of Bills

CITY OF WAITE PARK  
GL540R-V08.05 PAGE 2

VENDOR NAME	AMOUNT	ACCOUNT NAME	FUND & ACCOUNT	CLAIM	INVOICE	PO#	F/P ID LINE
DESCRIPTION							
REPORT TOTALS:	250.42						

RECORDS PRINTED - 000003

ACS FINANCIAL SYSTEM  
07/19/2017 10:59:48

Schedule of Bills

CITY OF WAITE PARK  
GL060S-V08.05 RECAPPAGE  
GL540R

FUND RECAP:

FUND	DESCRIPTION	DISBURSEMENTS
603	SENIOR CENTER FUND	250.42
TOTAL ALL FUNDS		250.42

BANK RECAP:

BANK	NAME	DISBURSEMENTS
CHEK	PLAZA PARK BANK	250.42
TOTAL ALL BANKS		250.42

THE PRECEDING LIST OF BILLS PAYABLE WAS REVIEWED AND APPROVED FOR PAYMENT.

DATE ..... APPROVED BY .....  
.....  
.....

ACS FINANCIAL SYSTEM  
07/25/2017 11:51:04

Schedule of Bills

CITY OF WAITE PARK  
GL050S-V08.05 COVERPAGE  
GL540R

Report Selection:

RUN GROUP... 0717D2 COMMENT... 072517 MISC DISBURSEMENT

DATA-JE-ID DATA COMMENT  
-----

D-07252017-052 072517 MISC DISBURSEMENT

Run Instructions:

Jobq	Banner	Copies	Form	Printer	Hold	Space	LPI	Lines	CPI	CP	SP	RT
L		01			N	S	6	066	10			

Schedule of Bills

VENDOR NAME DESCRIPTION	AMOUNT	ACCOUNT NAME	FUND & ACCOUNT	CLAIM	INVOICE	PO#	F/P ID LINE
ADVANCED FIRST-AID INC AED (1)-WARMING HOUSE AED (2)-PW FACILITY	1,675.13 3,350.27 5,025.40	REPAIR & MAINTENANCE CAPITAL EXPENDITURES *VENDOR TOTAL	SUP 101.4552.2200 101.4212.5400		317-431 317-431	020081 020081	P 052 00001 P 052 00002
ALL STATE COMMUNICATIONS MATERIALS/SECURITY-PWF	20,000.00	CAPITAL EXPENDITURES	101.4212.5400		265450	020083	P 052 00236
AUTO VALUE PARTS STORES HYD FLUID (2)-STOCK VALVE STEM	65.98 22.99 88.97	REPAIR & MAINTENANCE REPAIR & MAINTENANCE *VENDOR TOTAL	SUP 101.4212.2200 SUP 101.4212.2200		7438733 7442701	028777 028815	P 052 00004 P 052 00003
BATTERIES PLUS SPC MULTI SCBA BATTERIES	118.80	REPAIR & MAINTENANCE	SUP 101.4120.2200		036-477975	028295	P 052 00085
BOUND TREE MEDICAL LLC GLOVES/AED PADS/ETC	393.62	OPERATING SUPPLIES	101.4120.2100		82557233	028296	P 052 00086
BROTHERS FIRE PROTECTION 0617-053118 FIRE MON-PWF	275.00	SERVICE CONTRACT	101.4094.4015		21303		052 00067
CAL ENTERPRISE INC BATTERY #476	79.40	REPAIR & MAINTENANCE	SUP 101.4212.2200		19223010064	028805	P 052 00005
CENTRAL HYDRAULICS INC BREATHER CAP #412	18.35	REPAIR & MAINTENANCE	SUP 703.4825.2200		84676	028819	P 052 00006
CENTRAL MCGOWAN INC OXYGEN REFILL (4)	59.40	REPAIR & MAINTENANCE	101.4110.3700		131418	000737	P 052 00007
CHARTER COMMUNICATIONS 0717 INTERNET/TV CL 0717 INTERNET/TV CH 0717 INTERNET/TV FD 0717 INTERNET/TV BI 0717 INTERNET/TV PW 0717 INTERNET/TV WTR 0717 INTERNET/TV SWR 0717 INTERNET/TV RADIO C 0717 INTERNET/PHONE PK 0717 INTERNET/TV WTR 0717 INTERNET/TV SWR 0717 INTERNET/TV PW 0717 INTERNET WARMING H 0717 TV WARMING HOUSE	34.60 11.01 24.01 34.60 22.02 22.02 22.03 114.58 8.02 39.01 39.01 143.07 89.98 8.02 611.98	COMMUNICATIONS COMMUNICATIONS COMMUNICATIONS COMMUNICATIONS COMMUNICATIONS COMMUNICATIONS COMMUNICATIONS COMMUNICATIONS COMMUNICATIONS COMMUNICATIONS COMMUNICATIONS COMMUNICATIONS COMMUNICATIONS COMMUNICATIONS COMMUNICATIONS *VENDOR TOTAL	101.4051.3100 101.4094.3100 101.4120.3100 101.4140.3100 101.4212.3100 703.4825.3100 709.4843.3100 101.4191.3100 101.4552.3100 703.4825.3100 709.4843.3100 101.4212.3100 101.4552.3100 101.4552.3100		8128071317 8128071317 8128071317 8128071317 8128071317 8128071317 8128071317 8128071317 8128071317 8128071317 8128071317 8128071317 8128071317 8128071317 8128071317		052 00008 052 00009 052 00010 052 00011 052 00012 052 00013 052 00014 052 00015 052 00016 052 00017 052 00018 052 00019 052 00020 052 00021
CITY OF SAUK RAPIDS 2ND QTR 2017 GANG STRIKE	3,079.41	OTHER CONTRACTUAL SERVIC	101.4110.4070		071317		052 00068

Schedule of Bills

VENDOR NAME DESCRIPTION	AMOUNT	ACCOUNT NAME	FUND & ACCOUNT	CLAIM	INVOICE	PO#	F/P	ID	LINE
CP FLAGS, FLAGPOLES & PR POLES/FLAGS & INST-PWF SWIVEL/ETC-CH FLAG POLE	10,329.50 107.60 10,437.10	CAPITAL EXPENDITURES REPAIR & MAINTENANCE SUP *VENDOR TOTAL	101.4212.5400 101.4094.2200		2975 2978	020079 028893	P	052	00022 00023
CPS TECHNOLOGY SOLUTIONS 2017-18 SW SERV AGREEMNT 2017-18 SW AGREEMNT 2017-18 SW AGREEMNT BACKUP TAPES	1,662.49 356.24 356.25 612.98 2,987.96	SERVICE CONTRACT SERVICE CONTRACT SERVICE CONTRACT OPERATING SUPPLIES *VENDOR TOTAL	101.4051.4015 703.4825.4015 709.4843.4015 101.4051.2100		372837 372837 372837 372848			052	00069 00070 00071 00072
CUSTOM ACCENTS INC WINDSOCKS (3)-PICKLEBALL CITY FLAGS (4)/SET UP	265.00 1,185.02 1,450.02	BEAUTIFICATION PROJ SUPP REPAIR & MAINTENANCE SUP *VENDOR TOTAL	101.4552.2230 101.4094.2200		71477 71500	020076 020080	P	052	00024 00025
CUSTOMIZED FIRE RESCUE T 050817 HIGH ANGLE TR-FD 061517 INITIAL ATT TR-FD	750.00 1,500.00 2,250.00	TRAINING/TRAVEL/HOTEL TRAINING/TRAVEL/HOTEL *VENDOR TOTAL	101.4120.3200 101.4120.3200		1098 1098	028297 028297	P	052	00026 00027
DALCO ENTERPRISES, INC FLOOR SCRUBBER	7,701.84	CAPITAL EXPENDITURES	101.4212.5400		3196702	028755	P	052	00028
DELTA DENTAL OF MN 0817 DENTAL PREM BB 0817 DENTAL PREM RS	69.24 33.84 103.08	HOSPITALIZATION INSURANC HOSPITALIZATION INSURANC *VENDOR TOTAL	101.4140.1500 101.4212.1500		070517 070517	028712 028712	P	052	00073 00074
EL-JAY MECHANICAL, INC IRRIGATION-LIBRARY RPZ REP-WTR SALESMAN	599.75 662.50 1,262.25	REPAIR & MAINTENANCE SUP REPAIR & MAINTENANCE *VENDOR TOTAL	101.4095.2200 703.4824.3700		M7429-1 M7647-1	028801 028450	P	052	00030 00029
ELLIOTT AUTO SUPPLY CO I BELT/PULLEYS (2) #402	66.86	REPAIR & MAINTENANCE SUP	101.4212.2200		124-052396	028814	P	052	00031
EMERGENCY RESPONSE SOLUT FLOW TEST/REP SCBA #1215	125.77	REPAIR & MAINTENANCE	101.4120.3700		9055	028298	P	052	00087
FASTENAL CO SHELVING-PW FAC	21,283.46	CAPITAL EXPENDITURES	101.4212.5400		MNST199638	028647	P	052	00032
FLAHERTY HOOD PA 0617 BONDING SERVICE 0617 LABOR/EMP SERVICES	62.50 168.75 231.25	LEGAL SERVICES LEGAL SERVICES *VENDOR TOTAL	101.4060.3005 101.4060.3005		10199 10288			052	00076 00075

Schedule of Bills

VENDOR NAME	DESCRIPTION	AMOUNT	ACCOUNT NAME	FUND & ACCOUNT	CLAIM	INVOICE	PO#	F/P	ID	LINE
FREIGHTLINER OF ST CLOUD										
	DOT INSP #601	82.50	REPAIR & MAINTENANCE	101.4212.3700		136429	028790	P	052	00040
	OIL/AIR DRYER SVC #601	470.76	REPAIR & MAINTENANCE SUP	709.4841.2200		136430	028791	P	052	00039
	BELT/COMPRESSOR/REP #444	1,558.19	REPAIR & MAINTENANCE SUP	101.4212.2200		136447	028799	P	052	00038
	DOT INSP #444	82.50	REPAIR & MAINTENANCE	101.4212.3700		1364475	028798	P	052	00037
	DOT INSP #445	82.50	REPAIR & MAINTENANCE	101.4212.3700		136536	028816	P	052	00035
	AIR DRYER REP/ETC #445	574.77	REPAIR & MAINTENANCE SUP	101.4212.2200		136537	028817	P	052	00036
	DOT INSP #442	82.50	REPAIR & MAINTENANCE	101.4212.3700		136569	028825	P	052	00033
	AIR DRYER REP/ETC #442	486.93	REPAIR & MAINTENANCE SUP	101.4212.2200		136571	028824	P	052	00034
		3,420.65	*VENDOR TOTAL							
FULL SPECTRUM FINISHING										
	PAINTING-COUNCIL CHAMBER	6,175.00	CAPITAL EXPENDITURES	101.4094.5400		1074	020067	P	052	00078
GREYSTONE CONSTRUCTION C										
	FINAL PYT-PW SALT BLDG	3,977.25	CONSTRUCTION COSTS	443.4214.6300		3			052	00079
HARDRIVES INC										
	CONCRETE-FLAGS PW FAC	360.00	CAPITAL EXPENDITURES	101.4212.5400		180978	028762	P	052	00041
	HOT MIX (2.09T)-STR REP	99.28	REPAIR & MAINT SUPPLIES-	101.4212.2210		181173	028806	P	052	00042
		459.28	*VENDOR TOTAL							
HAWKINS INC										
	PH DOWN LO/ETC-SP PAD	651.99	REPAIR & MAINTENANCE SUP	101.4554.2200		4102611RI	028451	P	052	00044
	SOAP TANK -PW FACILITY	325.00	REPAIR & MAINTENANCE SUP	101.4094.2200		4102611RI	028451	P	052	00045
	AZONE/FLUORIDE/ETC-WTP	2,854.89	REPAIR & MAINTENANCE SUP	703.4822.2200		4102614	028452	P	052	00046
	AZONE 15/ETC-SP PAD	132.75	REPAIR & MAINTENANCE SUP	101.4554.2200		4111354	028458	P	052	00043
		3,964.63	*VENDOR TOTAL							
HEALTHPARTNERS										
	0817 HEALTH INS PREM CL	6,135.10	HOSPITALIZATION INSURANC	101.4051.1500		74090900			052	00047
	0817 HEALTH INS PREM PL	1,333.72	HOSPITALIZATION INSURANC	101.4091.1500		74090900			052	00048
	0817 HEALTH INS PREM CH	666.86	HOSPITALIZATION INSURANC	101.4094.1500		74090900			052	00049
	0817 HEALTH INS PREM PD	25,407.55	HOSPITALIZATION INSURANC	101.4110.1500		74090900			052	00050
	0817 HEALTH INS PREM BI	1,333.72	HOSPITALIZATION INSURANC	101.4140.1500		74090900			052	00051
	0817 HEALTH INS PREM PW	9,608.91	HOSPITALIZATION INSURANC	101.4212.1500		74090900			052	00052
	0817 HEALTH INS PREM SNW	1,267.06	HOSPITALIZATION INSURANC	101.4213.1500		74090900			052	00053
	0817 HEALTH INS PREM SS	306.77	HOSPITALIZATION INSURANC	715.4224.1500		74090900			052	00054
	0817 HEALTH INS PREM PK	1,640.46	HOSPITALIZATION INSURANC	101.4552.1500		74090900			052	00055
	0817 HEALTH INS PREM WTR	3,561.06	HOSPITALIZATION INSURANC	703.4825.1500		74090900			052	00056
	0817 HEALTH INS PREM SWR	2,334.01	HOSPITALIZATION INSURANC	709.4843.1500		74090900			052	00057
		53,595.22	*VENDOR TOTAL							
HEARTLAND SECURITY SERVI										
	ANNUAL FIRE ALM INSP-WTP	270.56	REPAIR & MAINTENANCE	703.4825.3700		478350	020073	P	052	00080
	ANNUAL FIRE SPR INSP-WTP	199.50	REPAIR & MAINTENANCE	703.4825.3700		478352	020072	P	052	00081
		470.06	*VENDOR TOTAL							
HERC-U-LIFT INC										
	FINANCE CHARGE ON LIFT	112.97	CAPITAL EXPENDITURES	101.4212.5400		SF0055640	020077	P	052	00058

Schedule of Bills

VENDOR NAME DESCRIPTION	AMOUNT	ACCOUNT NAME	FUND & ACCOUNT	CLAIM	INVOICE	PO#	F/P	ID	LINE
HOME DEPOT CREDIT SERVIC ROUND UP (3)-PARKS	56.91	REPAIR & MAINTENANCE SUP	101.4552.2200		2012132	028781	P	052	00088
LOCTITE/SPRING LINK-PW	15.32	REPAIR & MAINTENANCE SUP	101.4212.2200		5013142	028796	P	052	00089
CHAIN 70'/ETC-HEALTHY TR	162.20	REPAIR & MAINTENANCE SUP	101.4552.2200		5013157	028797	P	052	00090
	234.43	*VENDOR TOTAL							
HOWE/JEFFREY R 0717 BUILDING INSP SVC	8,446.00	OTHER CONTRACTUAL SERVIC	101.4140.4070		0717			052	00082
IDVILLE ID PRINTER REPAIR	8.38	OFFICE SUPPLIES/POSTAGE	101.4051.2000		3235957	000739	P	052	00059
ID PRINTER REPAIR	8.38	OFFICE SUPPLIES/POSTAGE	101.4110.2000		3235957	000739	P	052	00060
ID PRINTER REPAIR	8.37	OFFICE SUPPLIES/POSTAGE	101.4212.2000		3235957	000739	P	052	00061
ID PRINTER REPAIR	8.37	OFFICE SUPPLIES/POSTAGE	101.4120.2000		3235957	000739	P	052	00062
	33.50	*VENDOR TOTAL							
IIMC 100117-093018 DUES KV	160.00	MISC - DUES	101.4051.4010		070617	010076	P	052	00083
INNOVATIVE OFFICE SOLUTI MARKERS/STRING/ETC-PD	24.84	OFFICE SUPPLIES/POSTAGE	101.4110.2000		IN1665803	000730	P	052	00063
FILE FOLDERS/ETC-PD	58.30	OFFICE SUPPLIES/POSTAGE	101.4110.2000		IN1668573	000731	P	052	00064
	83.14	*VENDOR TOTAL							
J P COOKE CO 2017 ADDT'L 100 PET TAGS	52.74	REPAIR & MAINTENANCE SUP	101.4196.2200		460394	028715	P	052	00066
J&K BRUGH INC WATER PUMP REPL #402	336.81	REPAIR & MAINTENANCE SUP	101.4212.2200		13726	028835	P	052	00065
JEFF CURTIS ELECTRIC, IN ELECTRICAL-COUNCIL CHAMB	20,881.85	CAPITAL EXPENDITURES	101.4094.5400		1843	020070	P	052	00084
JOHNSON/SHAUNNA 0417-071717 MISC MILEAGE	379.10	TRAINING/TRAVEL/HOTEL	101.4051.3200		071717			052	00093
KAISER/ALLEN CURBING-PW FAC LANDSCAPE	1,848.00	CAPITAL EXPENDITURES	101.4094.5400		10038	028812	P	052	00091
LANGUAGE LINE SERVICES 0617 INTERP-SOM/SPAN	217.00	PROF SERVICES - INTERPRE	101.4110.3031		4109512	000733	P	052	00092
LEWIS MOTOR REPAIR INC BLOWER MTR #2 DIAG-WTP	258.00	REPAIR & MAINTENANCE	703.4822.3700		0040309	028457	P	052	00094
LEXISNEXIS RISK DATA MAN 0617 MIN COMMIT BALANCE	50.00	INVESTIGATIVE SUPPLIES	101.4110.2150		1032000-201706	000728	P	052	00095
LUBE-TECH & PARTNERS, LL OIL/ANTIFREEZE-PW FAC	3,339.87	GAS & OIL PURCHASES	101.4212.2110		978144	028800	P	052	00096

Schedule of Bills

VENDOR NAME DESCRIPTION	AMOUNT	ACCOUNT NAME	FUND & ACCOUNT	CLAIM	INVOICE	PO#	F/P	ID	LINE
M R SIGN CO INC 4TH ST S SIGNS (2)	72.11	REPAIR & MAINTENANCE	SUP 101.4216.2200		196335	028841	P	052	00097
MARK J TRAUT WELLS INC 071417 8 WATER TESTS	184.00	WATER TESTS	703.4825.4820		298444			052	00098
MARTIN MARIETTA MATERIAL GRANITE STONE-PW FAC	1,784.83	CAPITAL EXPENDITURES	101.4212.5400		20644163/75617	028763	P	052	00099
MCDOWALL COMFORT MANAGEM DRAFT FAN MTR REPL #4	603.64	REPAIR & MAINTENANCE	101.4094.3700		235188	028600	P	052	00105
AC REP-FD	230.00	REPAIR & MAINTENANCE	101.4094.3700		235189	028914	P	052	00104
DEHUMIDIFIER REP-WTP	643.75	REPAIR & MAINTENANCE	SUP 703.4822.2200		235190/531399	028439	P	052	00100
DIFFUSER-CH ADMIN	267.50	REPAIR & MAINTENANCE	101.4094.3700		235250	028919	P	052	00106
060717 AC REP #3-CH	305.00	REPAIR & MAINTENANCE	101.4094.3700		53120	028913	P	052	00103
060517 AC REP #3-CH	411.93	REPAIR & MAINTENANCE	101.4094.3700		531200	028915	P	052	00102
FURNACE CONTRACT-CH	2,284.00	REPAIR & MAINTENANCE	101.4094.3700		531288	028916	P	052	00101
	4,745.82	*VENDOR TOTAL							
MENARDS									
SUNSCREEN/ROUND UP-PW	41.96	REPAIR & MAINTENANCE	SUP 101.4212.2200		38808	028808	P	052	00112
HEATER WTR SALESMAN-PWF	299.99	CAPITAL EXPENDITURES	101.4212.5400		53955	028765	P	052	00109
FITTINGS-WTP	24.96	REPAIR & MAINTENANCE	SUP 101.4212.2200		54354	020065	P	052	00107
CARIBINER CLIPS-NTU SIGN	11.92	COMMUNITY POLICING	101.4110.2140		54906	000732	P	052	00110
PAINT/TRAYS/TAPE-PW FAC	107.33	REPAIR & MAINTENANCE	SUP 101.4094.2200		55138	028794	P	052	00108
FLOOR PAINT-PW FAC	53.96	REPAIR & MAINTENANCE	SUP 101.4094.2200		55444	028803	P	052	00111
POLY CLEAR/BOLT SNAP	89.63	REPAIR & MAINTENANCE	SUP 101.4212.2200		55771	028917	P	052	00114
CABLE TIES/VELCRO	8.75	REPAIR & MAINTENANCE	SUP 101.4212.2200		55818	020075	P	052	00113
TAPE MEASURER/ETC-PW	58.65	REPAIR & MAINTENANCE	SUP 101.4212.2200		56056	028836	P	052	00116
GAGABALL SUPPLIES-JAGIEL	2,021.71	REPAIR & MAINTENANCE	SUP 101.4552.2200		56061	028839	P	052	00115
	2,718.86	*VENDOR TOTAL							
MIDWAY IRON METAL CO INC LENTLE-FD BRICK REP	38.50	REPAIR & MAINTENANCE	SUP 101.4094.2200		359639	028830	P	052	00117
MN COPY SYSTEMS									
0612-071117 PW SHOP COPY	8.00	SERVICE CONTRACT	101.4212.4015		220811			052	00118
0612-071117 PW SHOP COPY	5.00	SERVICE CONTRACT	703.4825.4015		220811			052	00119
0612-071117 PW SHOP COPY	5.00	SERVICE CONTRACT	709.4843.4015		220811			052	00120
0612-071117 PW SHOP COPY	2.00	SERVICE CONTRACTS	715.4224.4015		220811			052	00121
	20.00	*VENDOR TOTAL							
MN PIPE AND EQUIPMENT UPGR WTR SALESMAN/ETC-PW	4,832.50	REPAIR & MAINTENANCE	SUP 703.4824.2200		377236	020063	P	052	00122
NORTHERN STAR THERAPY LT PRE-EMPLOY PHYSICAL-JW	59.00	PROFESSIONAL SERV PHYSIC	101.4120.3011		071117	028717	P	052	00123
PERFORMANCE POOL & SPA, SAMPLING SUPPLIES-SP PAD	51.26	REPAIR & MAINTENANCE	SUP 101.4554.2200		316975	028462	P	052	00124

Schedule of Bills

VENDOR NAME	DESCRIPTION	AMOUNT	ACCOUNT NAME	FUND & ACCOUNT	CLAIM	INVOICE	PO#	F/P	ID	LINE
QUARRY CREEK NURSERY INC	EDGING/SPIKES-PW FAC	596.00	CAPITAL EXPENDITURES	101.4212.5400		0080003825	028780	P	052	00126
	ADDT'L EDGING/SPIKES-PWF	584.00	CAPITAL EXPENDITURES	101.4212.5400		0080003889	028788	P	052	00127
	EDGING/SPIKES/EDGER-PWF	388.00	CAPITAL EXPENDITURES	101.4212.5400		0080003975	028811	P	052	00125
		1,568.00	*VENDOR TOTAL							
RAJKOWSKI HANSMEIER LTD	0617 CRIMINAL	9,062.00	LEGAL SERVICES	101.4110.3005		77052			052	00128
	0617 MEETINGS	202.50	LEGAL SERVICES	101.4060.3005		77064			052	00129
	0617 HOTEL LICENSING	67.50	LEGAL SERVICES	101.4060.3005		77064			052	00130
	0617 HORIZON ROOFING	54.00	LEGAL SERVICES	101.4060.3005		77064			052	00131
	0617 DRIVERS LICENSE REL	62.50	LEGAL SERVICES	101.4110.3005		77064			052	00132
	0617 MN SCHOOL OF BUSINE	189.00	LEGAL SERVICES	101.4060.3005		77064			052	00133
	0617 PD DATA REQUEST	37.50	LEGAL SERVICES	101.4110.3005		77064			052	00134
	0617 ANDERSON PROP ROAD	27.00	LEGAL SERVICES	101.4060.3005		77064			052	00135
		9,702.00	*VENDOR TOTAL							
RUSSELL/LORRAINE	0717 LANDSCAPE CONSULT	900.00	OTHER CONTRACTUAL SERVIC	101.4552.4070		0717			052	00136
SAM'S CLUB/SYNCHRONY BAN	CUPS (16 OZ)	15.56	OFFICE SUPPLIES/POSTAGE	101.4110.2000		071017			000736	P 052 00137
SECURITY LOCKSMITHS INC	LOCK REPL/ETC-LIBRARY	137.50	REPAIR & MAINTENANCE	101.4095.3700		51221			028597	P 052 00161
SEH INC	0617 PW FACILITY	3,438.20	ENGINEERING COSTS	443.4214.6301		334920			052	00145
	0617 PW FACILITY EXP	221.38	ENGINEERING COSTS	443.4214.6301		334920			052	00146
	0617 17TH AVE S PH 2	2,648.50	ENGINEERING COSTS	442.4214.6301		335087			052	00150
	0617 17TH AVE S PH 2 EXP	55.97	ENGINEERING COSTS	442.4214.6301		335087			052	00151
	0617 AMPHITHEATER	622.00	GENERAL ENGINEERING	101.4211.3015		335089			052	00144
	0617 GIS	3,484.50	GENERAL ENGINEERING	101.4211.3015		335090/335091			052	00142
	0617 GIS EXP	85.86	GENERAL ENGINEERING	101.4211.3015		335090/335091			052	00143
	0617 WINDSORGREEN APT	879.00	GENERAL ENGINEERING	101.4211.3015		335091			052	00152
	0617 WINDSORGREEN APT EX	4.24	GENERAL ENGINEERING	101.4211.3015		335091			052	00153
	0617 CITY PLANNING MTG	783.00	GENERAL ENGINEERING	101.4211.3015		335091			052	00154
	0617 CITY PLANNING MT EX	16.96	GENERAL ENGINEERING	101.4211.3015		335091			052	00155
	0617 COUNCIL WORK SESS	87.00	GENERAL ENGINEERING	101.4211.3015		335091			052	00156
	0617 MENARDS	174.00	GENERAL ENGINEERING	101.4211.3015		335091			052	00157
	0617 MENARDS EXP	4.24	GENERAL ENGINEERING	101.4211.3015		335091			052	00158
	0617 OLD TH 23 N	174.00	GENERAL ENGINEERING	101.4211.3015		335091			052	00159
	0617 WELLS	87.00	WELLHEAD PROTECTION	703.4825.3013		335091			052	00160
	0617 PICKLEBALL COURTS	1,542.10	GENERAL ENGINEERING	101.4211.3015		335092			052	00140
	0617 PICKLEBALL COURT EX	3.71	GENERAL ENGINEERING	101.4211.3015		335092			052	00141
	0617 SILVER LEAF HOTELS	2,703.50	GENERAL ENGINEERING	101.4211.3015		335093			052	00138
	0617 SILVER LEAF HTLS EX	46.31	GENERAL ENGINEERING	101.4211.3015		335093			052	00139
	0617 2017 WTR SUPPLY PLN	1,350.00	WELLHEAD PROTECTION	703.4825.3013		335440			052	00147
	0617 WELL #6	8,256.60	ENGINEERING COSTS	703.4830.6301		335564			052	00148
	0617 WELL #6 EXP	47.70	ENGINEERING COSTS	703.4830.6301		335564			052	00149
		26,715.77	*VENDOR TOTAL							

Schedule of Bills

VENDOR NAME DESCRIPTION	AMOUNT	ACCOUNT NAME	FUND & ACCOUNT	CLAIM	INVOICE	PO#	F/P	ID	LINE
SELECT ACCOUNT									
0717 HSA USER FEE CL	18.40	HOSPITALIZATION INSURANC	101.4051.1500		1195014			052	00162
0717 HSA USER FEE PLAN	4.00	HOSPITALIZATION INSURANC	101.4091.1500		1195014			052	00163
0717 HSA USER FEE CH	2.00	HOSPITALIZATION INSURANC	101.4094.1500		1195014			052	00164
0717 HSA USER FEE PD	76.90	HOSPITALIZATION INSURANC	101.4110.1500		1195014			052	00165
0717 HSA USER FEE BI	4.00	HOSPITALIZATION INSURANC	101.4140.1500		1195014			052	00166
0717 HSA USER FEE PW	20.88	HOSPITALIZATION INSURANC	101.4212.1500		1195014			052	00167
0717 HSA USER FEE SNOW	3.91	HOSPITALIZATION INSURANC	101.4213.1500		1195014			052	00168
0717 HSA USER FEE ST SWR	0.88	HOSPITALIZATION INSURANC	715.4224.1500		1195014			052	00169
0717 HSA USER FEE PARKS	5.06	HOSPITALIZATION INSURANC	101.4552.1500		1195014			052	00170
0717 HSA USER FEE WTR	10.89	HOSPITALIZATION INSURANC	703.4825.1500		1195014			052	00171
0717 HSA USER FEE SWR	7.18	HOSPITALIZATION INSURANC	709.4843.1500		1195014			052	00172
	154.10	*VENDOR TOTAL							
SENTRA SOTA SHEET METAL FRAME FABRICATION (2)	60.00	REPAIR & MAINTENANCE	101.4552.3700		27343	028598	P	052	00173
SHIFT TECHNOLOGIES INC UPS AND PRINTER REPAIRS	312.50	REPAIR & MAINTENANCE	101.4051.3700		51139			052	00174
SHINGOBEE BUILDERS INC WALL/WINDOW REMODEL-CC	5,401.00	CAPITAL EXPENDITURES	101.4094.5400		17004.005.02	020068	P	052	00176
PLATFORMS/MOUNTS/ETC-CC	1,299.54	CAPITAL EXPENDITURES	101.4094.5400		17004.005.03	020069	P	052	00175
	6,700.54	*VENDOR TOTAL							
SITEONE LANDSCAPE SUPPLY SPRINKLER HEADS (2)-CH	65.00	REPAIR & MAINTENANCE SUP	101.4094.2200		81519550	028892	P	052	00178
SELENOIDS (6)-SP PAD	44.15	REPAIR & MAINTENANCE SUP	101.4554.2200		81531056	028783	P	052	00177
	109.15	*VENDOR TOTAL							
SPECTRUM SUPPLY LINERS (4)-PW	168.44	REPAIR & MAINTENANCE SUP	101.4212.2200		36757	028912	P	052	00179
TISSUE/LINERS-PARKS	154.41	REPAIR & MAINTENANCE SUP	101.4552.2200		98012	028894	P	052	00180
	322.85	*VENDOR TOTAL							
ST CLOUD ACQUISITION COM EXTINGUISHER-PD	96.00	REPAIR & MAINTENANCE	101.4110.3700		1196274	028599	P	052	00181
ST CLOUD AREA PLANNING O 2017 2ND HALF ASSESSMENT	1,928.00	MISCELLANEOUS	101.4091.4010		070117			052	00183
2017 2ND HALF D TURCH FE	1,168.00	MISCELLANEOUS	101.4091.4010		070117			052	00184
	3,096.00	*VENDOR TOTAL							
ST CLOUD MEDICAL GROUP P HEP B/TITER TEST	40.00	PROFESSIONAL SERV PHYSIC	101.4212.3011		29338	028714	P	052	00182
ST CLOUD TIMES #1076 0815 SUBSCRIPTION	33.00	ADVERTISEMENTS	101.4051.3300		071517			052	00185

Schedule of Bills

VENDOR NAME	DESCRIPTION	AMOUNT	ACCOUNT NAME	FUND & ACCOUNT	CLAIM	INVOICE	PO#	F/P	ID	LINE
ST JOSEPH TOWNSHIP	16 PAYABLE ST JOSEPH TWN	4,506.93	TOWNSHIP TAX SETTLEMENT	101.4980.4970		072117			052	00186
STEARNS COUNTY AUDITOR T	TITLE TRANS 03 TOYOTA CA	21.75	MISC - TITLE FEES	816.4110.4010		071117			052	00187
	REG 12 CHEVY TAHOE #213	11.00	DUES & SUBSCRIPTIONS	101.4110.4010		071417			052	00188
	WOBEGON TRAIL CONST	200,000.00	CONSTRUCTION COSTS	434.4214.6300		2017-00000003			052	00190
	2ND QTR 2017 EMS	1,750.00	SERVICE CONTRACT	101.4191.4015		2017-00000004			052	00189
		201,782.75	*VENDOR TOTAL							
STEARNS COUNTY SHERIFFS	2ND QTR 2017 6 MDT	341.28	TECHNOLOGY SERVICE CONTR	101.4110.4017		SD17-0159		000729	P	052 00191
THEISEN DESIGN MFG	HITCH MODIFICATION #476	180.00	REPAIR & MAINTENANCE SUP	101.4212.2200		2898		028813	P	052 00192
TIERNEY BROTHERS INC	AUDIO/VIDEO-PW FACILITY	22,649.22	CAPITAL EXPENDITURES	101.4212.5400		501859-1		020074	P	052 00193
	AUDIO/VIDEO-PW FACILITY	5,452.44	CAPITAL EXPENDITURES	101.4212.5400		745529/745530		020074	P	052 00202
	AUDIO/VIDEO-PW FACILITY	160.00	CAPITAL EXPENDITURES	101.4212.5400		745531		020074	P	052 00201
	AUDIO/VIDEO-PW FACILITY	3,042.02	CAPITAL EXPENDITURES	101.4212.5400		745532		020074	P	052 00200
	AUDIO/VIDEO-PW FACILITY	160.00	CAPITAL EXPENDITURES	101.4212.5400		745533		020074	P	052 00199
	AUDIO/VIDEO-PW FACILITY	8,176.86	CAPITAL EXPENDITURES	101.4212.5400		745534		020074	P	052 00198
	AUDIO/VIDEO-PW FACILITY	2,837.00	CAPITAL EXPENDITURES	101.4212.5400		745535		020074	P	052 00197
	AUDIO/VIDEO-PW FACILITY	2,911.61	CAPITAL EXPENDITURES	101.4212.5400		745536		020074	P	052 00196
	AUDIO/VIDEO-PW FACILITY	961.02	CAPITAL EXPENDITURES	101.4212.5400		745557/745537		020074	P	052 00194
	AUDIO/VIDEO-PW FACILITY	2,729.08	CAPITAL EXPENDITURES	101.4212.5400		74558		020074	P	052 00195
		49,079.25	*VENDOR TOTAL							
TWIN RIVER TIRE & AUTO I	TIRE INNER TUBE-PD CART	13.75	COMMUNITY POLICING	101.4110.2140		G-259682		028804	P	052 00235
UNUM	LIFE INSURANCE COMA									
	0817 LIFE PREMIUM CL	51.73	LIFE INSURANCE	101.4051.1520		071417			052	00203
	0817 LIFE PREMIUM PLAN	11.25	LIFE INSURANCE	101.4091.1520		071417			052	00204
	0817 LIFE PREMIUM CH	5.63	LIFE INSURANCE	101.4094.1520		071417			052	00205
	0817 LIFE PREMIUM PD	214.31	LIFE INSURANCE	101.4110.1520		071417			052	00206
	0817 LIFE PREMIUM BI	11.25	LIFE INSURANCE	101.4140.1520		071417			052	00207
	0817 LIFE PREMIUM PW	56.68	LIFE INSURANCE	101.4212.1520		071417			052	00208
	0817 LIFE PREMIUM SNOW	10.69	LIFE INSURANCE	101.4213.1520		071417			052	00209
	0817 LIFE PREMIUM ST SWR	2.36	LIFE INSURANCE	715.4224.1520		071417			052	00210
	0817 LIFE PREMIUM PARKS	13.62	LIFE INSURANCE	101.4552.1520		071417			052	00211
	0817 LIFE PREMIUM WTR	30.05	LIFE INSURANCE	703.4825.1520		071417			052	00212
	0817 LIFE PREMIUM SWR	19.93	LIFE INSURANCE	709.4843.1520		071417			052	00213
	0817 DIS PREMIUM CL	233.19	DISABILITY INS & OTHERS	101.4051.1510		071417			052	00214
	0817 DIS PREMIUM PLAN	50.29	DISABILITY INS & OTHERS	101.4091.1510		071417			052	00215
	0817 DIS PREMIUM CH	19.88	DISABILITY INS & OTHERS	101.4094.1510		071417			052	00216
	0817 DIS PREMIUM PD	884.46	DISABILITY INS & OTHERS	101.4110.1510		071417			052	00217
	0817 DIS PREMIUM BI	39.75	DISABILITY INS & OTHERS	101.4140.1510		071417			052	00218
	0817 DIS PREMIUM PW	213.80	DISABILITY INS & OTHERS	101.4212.1510		071417			052	00219
	0817 DIS PREMIUM SNOW	35.18	DISABILITY INS & OTHERS	101.4213.1510		071417			052	00220

Schedule of Bills

VENDOR NAME	DESCRIPTION	AMOUNT	ACCOUNT NAME	FUND & ACCOUNT	CLAIM	INVOICE	PO#	F/P	ID	LINE
UNUM	LIFE INSURANCE COMA									
	0817 DIS PREMIUM ST SWR	7.59	DISABILITY INS & OTHERS	715.4224.1510		071417			052	00221
	0817 DIS PREMIUM PARKS	48.64	DISABILITY INS & OTHERS	101.4552.1510		071417			052	00222
	0817 DIS PREMIUM WTR	133.69	DISABILITY INS & OTHERS	703.4825.1510		071417			052	00223
	0817 DIS PREMIUM SWR	84.26	DISABILITY INS & OTHERS	709.4843.1510		071417			052	00224
		2,178.23	*VENDOR TOTAL							
VEENSTRA/BRADLEY THOMAS	0717 TELEWISE MEETINGS	300.00	LOCAL ACCESS EXPENSES	101.4051.8300		0717			052	00225
VERIZON WIRELESS SERVICE	0611-071017 PD LAPTOPS	420.30	TECHNOLOGY SERVICE CONTR	101.4110.4017		9789089169			052	00226
VERNON MANUFACTURING CO.	SPEC KEY WTR SALESMAN-PW	35.00	REPAIR & MAINTENANCE SUP	703.4824.2200		18159	020064	P	052	00227
VIRNIG/KARLA	0517 MISC MILEAGE	23.22	TRAINING/TRAVEL/HOTEL	101.4051.3200		071517			052	00228
	0617 MISC MILEAGE	15.03	TRAINING/TRAVEL/HOTEL	101.4051.3200		071517			052	00229
		38.25	*VENDOR TOTAL							
WEST CENTRAL SANITATION	0617 2 COMPOST DUMPSTERS	200.00	OTHER CONTRACTUAL SERVIC	101.4223.4070		10942710			052	00230
WEX BANK	0622-072117 FUEL BI	40.84	GAS & OIL PURCHASES	101.4140.2110		50631846			052	00237
	0622-072117 FUEL CH	64.63	GAS & OIL PURCHASES	101.4094.2110		50631846			052	00238
	0622-072117 FUEL PD	2,413.89	GAS & OIL PURCHASES	101.4110.2110		50631846			052	00239
	0622-072117 CAR WASH BI	5.00	REPAIR & MAINTENANCE	101.4140.3700		50631846			052	00240
	0622-072117 SQUAD WASHES	74.93	REPAIR & MAINTENANCE	101.4110.3700		50631846			052	00241
	0622-072117 FUEL PW	1,307.79	GAS & OIL PURCHASES	101.4212.2110		50631846			052	00242
	0622-072117 FUEL PARKS	432.71	GAS & OIL PURCHASES	101.4552.2110		50631846			052	00243
	0622-072117 FUEL WTR	345.29	GAS & OIL PURCHASES	703.4825.2110		50631846			052	00244
	0622-072117 FUEL SWR	129.89	GAS & OIL PURCHASES	709.4843.2110		50631846			052	00245
	0622-072117 FUEL FD	116.90	GAS & OIL PURCHASES	101.4120.2110		50631846			052	00246
		4,931.87	*VENDOR TOTAL							
WILSON/DANIEL H	0110-050817 RELOCATE CON	3,928.00	LEGAL SERVICES	101.4060.3005		24019			052	00231
	0110-050817 COPIES	31.60	LEGAL SERVICES	101.4060.3005		24019			052	00232
		3,959.60	*VENDOR TOTAL							
WINDAHL TECHNOLOGY, LLC.	NEW PC-MS	970.00	CAPITAL EXPENDITURES	101.4110.5400		500307	000738	P	052	00233
WSI OF MN INC	061217 WEED CUT-2508 1 S	135.00	REPAIR & MAINTENANCE	101.4227.3700		07012017	028716	P	052	00234

ACS FINANCIAL SYSTEM  
07/25/2017 11:51:04

Schedule of Bills

CITY OF WAITE PARK  
GL540R-V08.05 PAGE 10

VENDOR NAME	DESCRIPTION	AMOUNT	ACCOUNT NAME	FUND & ACCOUNT	CLAIM	INVOICE	PO#	F/P	ID	LINE
REPORT TOTALS:		519,687.48								

RECORDS PRINTED - 000245

Schedule of Bills

FUND RECAP:

FUND	DESCRIPTION	DISBURSEMENTS
101	GENERAL FUND	281,332.91
434	RIVER'S EDGE PARK/TRAIL	200,000.00
442	17TH AVE SOUTH	2,704.47
443	PUBLIC WORKS FACILITY	7,636.83
703	WATER FUND	24,203.60
709	SEWER FUND	3,468.32
715	STORMWATER FUND	319.60
816	DRUG FORFEITURE	21.75
TOTAL ALL FUNDS		519,687.48

BANK RECAP:

BANK	NAME	DISBURSEMENTS
CHEK	PLAZA PARK BANK	519,687.48
TOTAL ALL BANKS		519,687.48

THE PRECEDING LIST OF BILLS PAYABLE WAS REVIEWED AND APPROVED FOR PAYMENT.

DATE ..... APPROVED BY .....  
.....  
.....

**Agenda Item No. 4**

Issue: Administrator Update

---

Updates will be presented at the time of the meeting.

ADJOURNMENT

Respectfully submitted,

Shaunna Johnson, Administrator

August 7, 2017