



CITY OF
WaitePark
 WHERE MINNESOTA CONNECTS

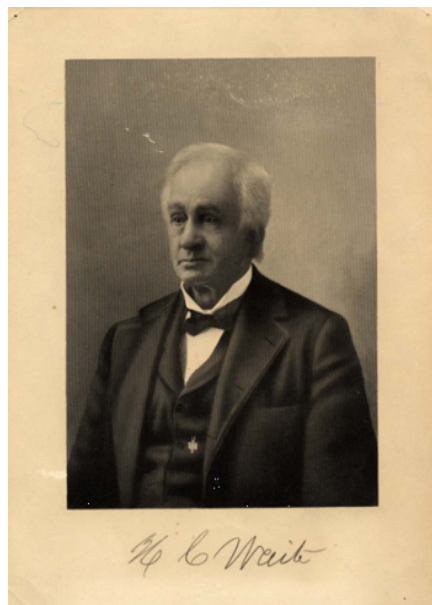
A Vision for the Future of Waite Park in 2043!

Connection Through How We Live, Work, Play, & Invest

April 19th – 21st, 2022

Table of Contents

Common Ground Vision Statements & Priorities.....	3
How Can We Get Started Right Away?.....	4
Next Steps.....	6
Committee Members.....	7
Background Discussion Notes.....	8
What We Want from the Future Search.....	9
Focus on the Past: What Can We Learn From Our Collective History?	10
Focus on the Present: Trends Impacting Waite Park’s Future.....	14
What We Are Doing / Want to Be Doing about Key Trends	16
What We Are Proud About / What We Are Sorry About.....	19
Focus on the Future: Ideal Future Scenarios.....	22
Common Ground, How to Get There, & Unresolved Differences.....	25



Henry Chester Waite (1830-1912) in a reminiscence about why he settled here
(*St. Cloud Journal-Press*, Aug. 25, 1904):

"Its ledge of granite rock argued stability of purpose ..."

"**Waite Park is certainly destined to become a most popular suburban city**, and no one not familiar with the amount of progress which is constantly going on there can comprehend the healthy growth this district is enjoying. A visit to Waite Park, however, will quickly convince the doubtful ones, and surprise the occasional visitor, that **the inhabitants of that little burg are not asleep**, and that their efforts in the direction of promotion and advancement have not been in vain."

St. Cloud Journal-Press, May 3, 1893,
following the first meeting of the Waite Park Village Council on April 17, 1893

[photo courtesy of Stearns History Museum]

"There will always be a
Waite Park ..."

Mayor Al Ringsmuth (1924-2018), at
a City Council meeting in 1967



[photo: Dave Schwarz, *St. Cloud Times*]



Common Ground Vision Statements & Priorities

Connecting Vision Statements (as of 5/16/2022)	“What are your priorities in the next 3-4 year and, what should be led by <u>the City</u> vs driven by <u>the community</u> ?”
Industrial/Commercial Development: Grow industrial/commercial development to provide stable, higher paying jobs, and be key anchors in the community	City- 29 Community- 10
Transportation: Coordinate with the larger community to create an easily accessible, connected, and safe transportation system across multiple modes that meets the changing needs	City- 22 Community- 3
Environment: Become better environmental stewards through proactive practices	City- 18 Community- 5
Entertainment: Become an entertainment destination that attracts new visitors, retains residents, and expands options for food, art, culture, sports, and more	City- 19 Community- 18
Housing: Create different housing options to meet a variety of needs	City- 14 Community- 12
Public Safety: Strengthen proactive engagement and trusting relationships with the entire community in solving issues in <u>all</u> areas of public safety	City- 9 Community- 28
Recreation: Increase recreation opportunities to give residents and visitors of all ages safe, affordable, and fun things to do	City- 3 Community- 26
Education: Enhance collaboration with education systems and services to meet the needs of all learners of all ages to equip them for success	City- 4 Community- 21

How Can We Get Started Right Away?

And what are the first 5 actions you can take?

Education – Becky Estrada, Adam Holm, Pat Welter, ?

What	Who	When	Help	
<ul style="list-style-type: none"> Define current collaboration and partnerships... to support continuing collaboration 	<ul style="list-style-type: none"> Learning and Teaching ISD 742 Community partners McKinley 742 Principals 	<ul style="list-style-type: none"> Charter schools Non-profits Religious private schools Post-secondary and career development Business community 	<ul style="list-style-type: none"> Next 3-6 mos. 	<ul style="list-style-type: none"> Contacts Space to meet Bi-lingual support Getting diverse representation <ul style="list-style-type: none"> Somali LatinX

Arts & Entertainment – Shaunna Johnson, Patrick Henry, ?

What	Action
Emphasize projects with Arts & Entertainment	Form a committee
International Culture / Marketplace Center <ul style="list-style-type: none"> Focus on granite Water 	Central MN Arts Board collaboration
Trails & Mixing in Art Sculptures	Walking trails with art sculpture

Public Safety (& Inclusion?) – Dave Bentrud, Alicia Mages, CeCe Turlouw, Paola ?, Brianda Cediell, Larry Fitzgerald, Aneesa?

5 Things – S.T. Action Items
1. Youth Activities/ Engagement
2. Community Liaisons/ Advisory (Tied to Community Policing Agreement?)
3. Mental Health
4. Engage Faith Leaders
5. Community Policing Agreement

Recreational Opportunities – Retain, attract residents & visitors –?

What	Who
Sauk River – increase connection & utilization <ul style="list-style-type: none"> Connect to Comp Plan 	Water outfitter (rent kayaks/canoes) SEH, City
Quarry/pit reclamation options – ordinance revisions	City/Private – Permitting
Campground	Solicit Interest of private owners/City/existing campground operators (KOA)
Sports Dome	Use with School District
Waterpark	
Youth Sports Tournaments	River’s Edge
Connect with CVB	
Senior Rec Options (beyond pickleball)	

Transportation – Mark Nolan, Bill Schluenz, Roger Buening, Susie Ardolf, Vic Schulz

5 Action Steps
1. Start a new Comprehensive Plan
2. Meet with the community
3. Analysis of existing congestion points
4. Build more separate bike paths
5. Make Division St. safer and more comfortable for walkers and bikers

Environmental Impact – Adam Ritsche, Darcy Soltis, Tim Gunther

No notes from discussion

Commercial/Industrial Development – Patrick Henry, Bill Molitor, Ken Schmitt, Tom Ardolf

“What” needs to be done?
1. Work on how to make land marketable
2. Changes to zoning requirements
3. Fees associated with developments – <i>can</i> anything be done?
4. Is there anything that can be done to support land developers while the property is being prepared (or waiting) to sell?

Next Steps

Refined Common Ground Statements

- Design Team met on May 5th & 11th to refine the Common Ground Statements (***shown on page 2***)

City of Waite Park Strategic Planning

- City Leaders (City Council, City Administrator, and Department Heads) are meeting in May, June, and July to utilize the results of the Future Search to align the vision, set priorities for the City, define strategic goals, and draft tactical plans for their goals
- You will be able to hear an update about the strategic plan **by July 2022**

Comprehensive Planning

- Starts this month (May) and will continue through the fall
- *If you are interested in being a part of this process, please contact Mark Nolan at mnolan@sehinc.com*

Action Planning Groups

- Groups from the Future Search event: if you have a date set to meet, please email city.hall@ci.waitepark.mn.us

Please include:

- Your group's name and/or meeting purpose
- Meeting date and time
- Meeting location
- Contact information

*Thank you to our committees
for hosting and planning this event!*

Steering Committee

Rick Miller, Mayor

Shaunna Johnson, City Administrator

Dave Bentrud, Police Chief

Jon Noerenberg, Planning & Community
Development Director

Design Team

Bill Schluenz, Public Works Director

Alicia Mages, Community Outreach Specialist

Ken Schmitt, City Council Member

Jason Bernick, Bernick's Director of Corporate Affairs

CeCe Terlouw, Terebinth Refuge Founder &
Executive Director

Patrick Henry, St. Cloud Times Writers Group

Adam Holm, Executive Director of
Community Education for ISD 742

Bill Molitor, RE/MAX Results Commercial Associate

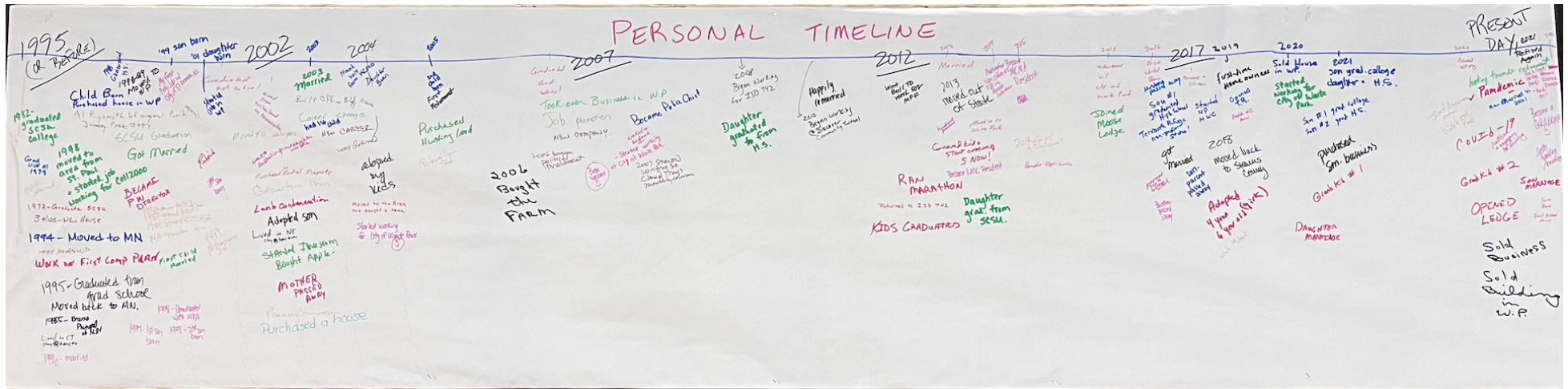
Background Discussion Notes

What We Want from the Future Search

<i>Hope For...</i>	<i>Hope Not...</i>
<ul style="list-style-type: none"> • Vision and action plan to move forward: <ul style="list-style-type: none"> ○ Think long term ○ A good foundation for the future ○ Gather ideas and explore what could be for the future ○ Come out with precise plan and find right growth in land use ○ A vision for who we are, clear direction and realistic goals ○ A living document • Reflective of all participants: <ul style="list-style-type: none"> ○ Inclusion across groups ○ Everyone listens to each other, and all voices heard • In the spirit of good government: <ul style="list-style-type: none"> ○ Economically sound, constitutionally sound, prosperity of community, consensus ○ Makes a difference ○ Learn about our city and community <ul style="list-style-type: none"> ▪ Learn more about process and how to work together ▪ How the City grows • Attract people to our City: <ul style="list-style-type: none"> ○ Safe community ○ Attract people to the City, tech to the City, attract younger families to WP, good things come out for youth and seniors ○ Get rid of negative image of Waite Park from the press ○ Make Waite Park a destination city • Specific ideas: <ul style="list-style-type: none"> ○ More welcoming for senior citizens ○ More good-paying jobs ○ Continue to feel safe in the community ○ Welcoming to young people ○ Support cooperation with police 	<ul style="list-style-type: none"> • That this is a waste of our time • Do nothing, nothing happens, an exercise in futility: <ul style="list-style-type: none"> ○ A “dusty shelves” plan ○ Lack of follow through ○ Continue as we are now, fall on deaf ears ○ The City becomes stagnant • Unmanageable or unrealistic plans/goals • Miss out on perspectives or voices <ul style="list-style-type: none"> ○ Don’t confine us – square peg, round hole ○ People’s voice not heard • People feel overwhelmed, frustrated <ul style="list-style-type: none"> ○ Leave with a negative attitude ○ <i>Disrespectful</i> disagreements • Be in competition with other communities

Focus on Past: What Can We Learn from Our Collective History?

Personal Timeline – memorable events, turning points, achievements, major happenings, or decisions (1995 to Present)



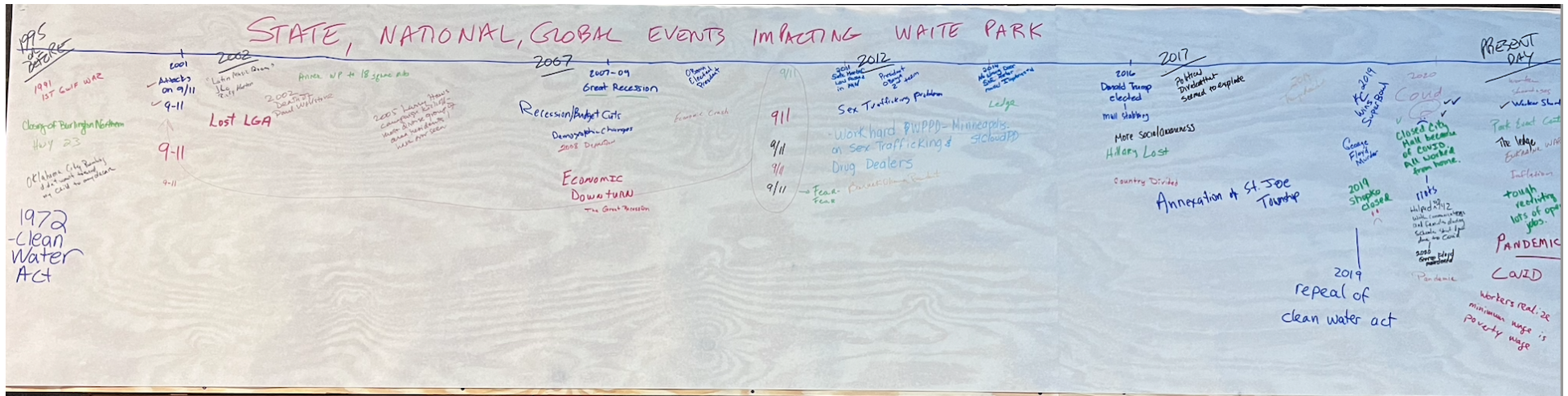
What this tells us about the people in the room

- Lot of families in the room – seems “family” is important to us, matters
- Lot of people who are educated (college)
- People moved to Waite Park
- People getting married, having kids
- Natural progression of our lives
- Business owners and key work milestones

The connections we see to the other timelines

- Human and drug trafficking are threats to families
- The developments in WP are supportive of families
- Pandemic has influenced us a great deal. Maybe we are more focused on family and values during the pandemic

State, National, Global Timeline – events impacting how people lived, worked, played, or invested in Waite Park (1995 to Present)



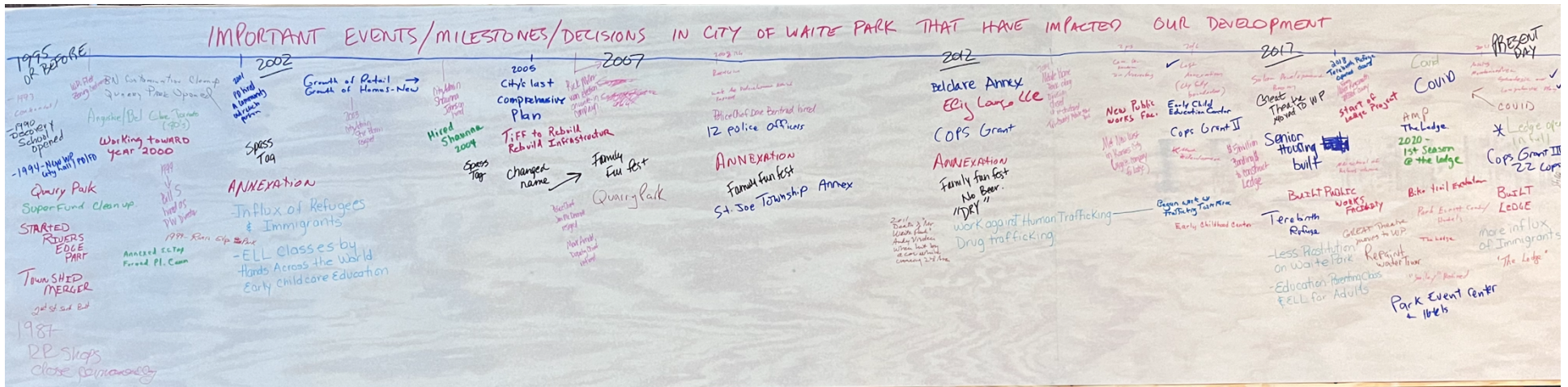
What this tells us about our collective history

- Fear of the unknown, uncertainty, being scared, unrest.
- Somali civil war and area was sanctuary city and growth of new
- Racism exposed
- Housing market, renting was up, home ownership was down
- Good and bad of socialism
- Lots of bad news
- Recession stopped development in Waite Park
- Politics and immigration policy

The connections we see to the other timelines

- Sad moments compared to personal timeline
- Personal timeline had a lot of positive events while this one was negative
- Global, national, and state events ripple down to local events
- We don't appreciate the impact of people's struggles to get here (through immigration) and the impact on our communities. It's important to have empathy towards people who have had struggles to get here. How does that influence our community?

Waite Park Timeline – important events, milestones, or decisions that have impacted our development (1995 to Present)



What this tells us about our recent history and its impact on the communities we serve

- Steady growth 1995 to now, in residential and in local infrastructure
- Annexation of St. Joe Township – initially brought drugs and sex trafficking in, but it’s getting a lot better
- Development, including Park Event Center, Quarry Park, trails, Rivers Edge Park, Great Theatre, The Ledge
- Rebuilding “Old Waite Park”
- Entertainment – Waite Park is becoming a destination center
- Concerns about number of local audience being 20% and 80% of attendees coming from outside of Waite Park, although the entertainment opportunities are drawing people here
- Waite Park is getting a little bit safer in regards to the decreasing sex trafficking, after Police Chief brought the issue into the public eye
- Community engagement with Public Safety
- Employment is going up – the City retains employees and has a lot of longevity particularly in supervisory staff
- The City is embracing immigration, which is a prominent part of our history
- Very little talk about the talk of business growth in the area

The connections we see to the other timelines

- The City has done a good job on supporting family-focused activities
- Coming through difficult times, growth after hard times – the community embraces challenges and takes next steps
- People stay here and are known – people that care and are trying to care for others. Individually, making a difference
- Care for our children, and moving back into community

Additional Discussion: How has the Somali Civil War affected Waite Park?

- **Diversity & Community Growth**
 - Immigration has brought in diversity and choices and options
 - West Africans, East Africans, Latin communities grow and enrich us – much of the population growth is from immigration
 - People are working and spending money here
- **Youth**
 - Young people are ready for work, school, are the future of the area. When we came, schools were closing and now they are full
 - Helping young people grow, develop is a way to attract businesses to area. In Waite Park, we need the vital workforce, the future of the area
 - The need for parks and family-oriented activities and resources for kids and families has become apparent
- **Families & Education**
 - When immigrant families came, we started with parenting classes and now the parents are the ones who dream for their kids to go to college
 - Our immigrants are coming from under-educated, war-torn countries and now they are here learning the importance of education
- **Community Unity & Strength**
 - Don't be scared to help your neighbors. This is how we learn how to grow as a community
 - When new immigrants came, we (as police) had trouble relating. As Police Chief, I want to police to the whole community, not just a segment. We need to build relationships, break down suspicion. How do we work together? Educate and relate with immigrants
 - We have the highest ethnic index in the state – we are the most diverse city in the state. I think immigrants are afraid to ask for help and the “villagers” are afraid or don't know how to offer help
 - National Night Out in St. Cloud – our neighborhood decided to have a welcome party to the new Islamic center with a “heritage dinner.” We got to know one another through gathering around food and storytelling, and have since continued community dinners. This has taught us that we all came from somewhere.

Day Two – Overnight Reflections

What have you been thinking about since yesterday?

- **Who is not here?**
 - Arts, seniors, manufacturing, young people?
 - Doesn't seem the group reflects diversity of race from Waite Park
 - It's something to think about
- **Question from Cathy: Who in this room identifies as a senior? From the arts? People of color?**
 - Many hands raised for each group asked
- **Can you move forward even though you may be missing representation from some groups?**
 - Rick – this should be a living document that changes as we include and engage others
 - I think we can move forward. If we are scared to move forward, we will never do anything
 - If we acknowledge who is missing, we can include the missing folks in the work to moving forward
 - I don't think we need to have equal amounts of each group in order to do what we came here to do

What We Are Doing/Want to Be Doing about Key Trends

Education and Youth

- **Educator and student stress – “brain drain”**
 - Schools asked to do more
 - Teacher shortage creates stress for students (trying to connect with a new teacher every few days)
- **Fulfilling gaps in student needs**
 - More new-to-country students from Central America
 - Feeding students families over weekends
 - Expanded tutoring
 - Partnering with United Way
 - Keeping kids in home schools, busing kids who are housing insecure or houseless
 - Social emotional learning built into curriculum more than before
- **The vision – increased service to students**
 - Need mental health support for students and teachers
 - Need to hire bilingual teachers and integrate language
 - Help to decrease student houselessness
 - Providing students the recreational activities they want and need

Renters

- **What we’re doing now**
 - Focused on community safety and informing the public
 - City adding police officers, has a community engagement team
- **Trends that seem important**
 - Parks and spaces to get people outside and involved
 - The need for affordable housing and the fact rentals have increased (hard to save to buy a house)
 - We have increased transit and transportation options
- **What we need and can do**
 - Maybe need more youth-related transportation options
 - Renters can voice concerns to representatives

City Government Leaders

- **We have a changing community**
 - Many residents are elderly and 20% of population is youth
 - Original Waite Park immigrants came from NW Europe (settled in Old Waite Park); now immigrants in Waite Park from Africa and Central/South America
- **Changing demographics impact on involvement with city**
 - We are shifting away from one income household to two incomes
 - Work with partners to increase low-income housing to families
 - People are not as able to be involved as volunteers and in community engagement
- **Technology’s impacts on local businesses and tax base**
 - Loss of tax base if commerce is online. Need to diversify revenue and to increase development
 - Challenge is lack of infrastructure
 - Examine opportunities to avoid raising taxes (for example, The Ledge brings in people and revenue to take pressure off city)

Realtors, Developers, & Builders

- **Current development and support**
 - Meridian Granite Mining is the largest landowner and long-time employer (past, present, and future)
 - Quarry Park was paid for by country dollars and not the City
- **Current concerns**
 - High developer’s fee which discourages development
 - Rigid city development plan which is a challenge for infrastructure
- **Possible opportunities**
 - Could capitalize on Intersection of I94/23 for transportation hub
 - Could leverage best use of land, want more engagement with City so we can change this (development outside of WP?)
 - Visitors bring in funds, we don’t have to care for them as citizens

Non-Profits

- **Nonprofits trying to fulfill needs gaps (outside of government, private, etc. abilities)**
 - Stress on education
 - Decrease in affordable housing
 - Need for more workforce development (quality jobs, access, preparation)
 - Playing a part in community safety (emotional and physical)
- **Looking at intersectionality – the issues are interconnected**
 - Intergenerational trauma and stress in families
 - Lack of understanding and barriers
 - Low wage jobs, having to take multiple jobs
 - Lack of understanding in language needs
- **What we want to do**
 - More collaboration and holistic approaches across Non-Profit sectors
 - Need to give each family what they need holistically, to empower them and transform kids
 - Need public support (legislation) for Non-Profits: community-based, collaborative, holistic, flexible to meet real needs

Homeowners

- **Taxes**
 - Importance of understanding who pays taxes
 - Businesses pay lots more property taxes
 - Want responsible use of taxes and diversification of taxes
 - How is taxation distributed?
- **Roads and transportation**
 - Concern about alleys presentability
 - We need to be more vocal as residents about care of roads, transportation and transit ability of the City
- **National night out helps us know one another**
 - We want to take more responsibility for community and neighborhood events

Large Business

- **Changing workforce**
 - Immigration and its impact on business
 - As employers, accommodating different beliefs
 - Shortage of workers, and the need to shift how we include new groups in our businesses
 - Younger generation seeming to lose social skills with increase in technology, affects working relationships
 - With COVID, Baby Boomers have retired, leaves a much younger workforce (adapting now to their schedules)
 - Helping veterans get jobs when and where possible
- **Local taxes**
 - How they are spent
 - Making sure they are spent right

Small Business

- **High costs overall, tied to:**
 - Supply chain issues
 - Cash flow
 - Fuel prices
- **Labor challenges**
 - Increased costs
 - Benefits
 - Competing wages from other employers
- **Need to increase prices as small businesses, due to challenges**
 - Trying to expand hiring and find good people
 - Looking at cost saving opportunities, like electric vehicles fleet (but need the charging infrastructure)

City Staff

- **Growth**
 - Concern with keeping pace with growth as city staff/resources
 - Recruitment and retention challenges
 - Adopted 5-year staffing plan
 - Try to streamline hiring process (need to be nimble)
- **Community engagement**
 - There is more social isolation, it's why we started senior center
 - Lack of person-to-person interaction, especially with conflict resolution (skills, experience of young people)
 - Need to reboot citizen advisory group and coffee conversations
- **Scarcity issue**
 - Supply chain and pricing
 - All out of our control
 - We have had to prioritize

What We Are Proud About / What We Are Sorry About

Large Business

- **Proud's**
 - Family-first business, treating team members well with flexibility
 - Work/life balance so members can be cared for and be productive
 - Providing quality jobs with good wages/benefits
 - Supporting the community financially and in community events
 - Being responsible with resources, sustainability
- **Sorry's**
 - We regret we don't have enough volunteer resources for all the requests and all we want to do for the community
 - Our trucks wear on City roads through community and mining shakes the ground
 - We could be more inclusive in hiring and accommodate more social and ethnic needs

Education and Youth

- **Proud's**
 - Positive role we played during the pandemic:
 - Getting students connected with tech and wifi
 - Sound, nutritional choices (even if not popular with youth)
 - Bilingual efforts
 - Partnerships and high academic achievement
 - What we offer at Quarryview site (ECFE, adult/community ed, testing)
- **Sorry's**
 - Retain and recruit teachers of color and who are bilingual
 - Not always successful in our effort to bring more varieties of interesting foods for students
 - Sorry haven't done more to connect students w/ mentor programs
 - We are sorry, could always do more to engage families in our schools, make sure all voices are heard and shared with leadership

Non-Profit

- **Proud's**
 - We get to know our neighbors
 - Support for people living in Bel Clare in trailers
 - We try to overcome barriers put up by landlords
 - Support for new Community Outpost
 - Support for new Waite Park Non-Profits
 - Helping people who are housing insecure or renters
- **Sorry's**
 - We are sorry for not taking initiative to learn the names of our neighbors
 - Sorry that we don't focus enough for Waite Park
 - Sorry we are not able to sustain programming (sometimes fighting for resources amongst us)
 - Sorry we are not able to circumvent rules to get people what they need (dealing with systemic problems)
 - Sorry we have to accept scarcity as we do our work

Renters

- **Proud's**
 - We connect with youth and seniors
 - Hosted a successful tv show
 - Started an "adopt-a-drain" program
 - Involved with civil service processes to screen potential City employees
- **Sorry's**
 - We have not scheduled more time for community connections with immigrant populations
 - Sorry to have sold my house in Waite Park
 - Sorry not more involved in the City and community, not involved in more community events

City Staff

- **Proud's**
 - We have cohesive teams for services, employees show up, best department staff we've ever had
 - Good recruiting and retaining of staff
 - Excellent benefits are shaped by employees, family balance
 - City-minded and we collaborate and communicate across teams/departments
- **Sorry's**
 - We are sorry for not focusing on priorities as we juggle emergencies
 - Sorry there's a lack of reaching out due to lack of time and resources
 - We are reactive and wish to be more proactive in the community
 - We are sorry we don't have time for people
 - We are sorry department heads don't delegate more and grow employees because of time

Realtors, Developers, & Builders

- **Proud's**
 - Brought new restaurant to town, long term lease of business and new jobs
 - Built commercial building and brought 70 jobs
 - Trying to find best use of 145 acres to expand housing and commercial
 - Helping a commercial client who wants to expand in Waite Park
 - Helped two new tenants in buildings in Waite Park
- **Sorry's**
 - Wasn't successful with workforce housing development proposal – I wasn't able to get support necessary
 - Sorry we have not been involved in City government with development, zoning, or giving feedback

Homeowners

- **Proud's**
 - Proud I chose neighbors over money (forgoing money for selling to mining company because of noise pollution for neighbors)
 - Created community by neighborhood "text watch" (texting tree in response to incident), now neighbors are very connected and support one another
 - Waite Park Police support in keeping neighborhood safe
- **Sorry's**
 - We are not making connections with new neighbors
 - Sorry that we're not enough engaged with the Park Board to give feedback on decisions
 - Sorry we are not sufficiently involved in housing issues/solutions facing our community

Small Business

- **Proud's**
 - Involvement civically, in Spass Tag and Family Fun Fest
 - Proud of sponsoring events, such as fundraisers for causes or organizations and City-wide garage sale
 - Proud of development in time with City staff
 - Proud to be part of staff dedicated to the City
- **Sorry's**
 - Regret we haven't been able to draw new large businesses
 - Regret we don't always utilize local businesses
 - Regret not being more visible in community and knowing more people
 - Regret don't know local PD officers

City Government Leadership

- **Proud's**
 - Foresight of leaders of the past in development of the 2nd Street corridor
 - Foresight of leaders recently in development of The Ledge and other rec/entertainment/park options
 - Involvement in community
- **Sorry's**
 - Sorry we have not found new or more creative ways to engage community (different language, mechanisms), we are missing people
 - Sorry we have not worked to truly understanding the impacts of development, such as costs of staff, resources, money, impact long term, City services
 - Sorry about having narrow development plans in past, that we didn't include a broader spectrum of people
 - We have been reactionary to development

Large group reflection: What are you noticing?

- Lack of staff, volunteers, and time: we all struggle with this
- The willingness to acknowledge our sorry's and hope that we can do better. Part of benefits of Future Search is seeing how to engage in community and see what we can do to make a difference
- Community engagement – hometown pride, coming together and collaborating together, identifying with Waite Park, more than just a place for business. It's a community.
- Hearing a lot of good things. People working very hard to make this a better community. Recognizing barriers and working with others to break into different communities
- Enjoyed listening and feel like everyone is heading the right direction. There is an understanding that we want to do better.

Focus on the Future: Ideal Future Scenarios

Group 5 – A very progressive destination City, promoting unity and diversity

- Entertainment – camping, district with small shops
- Multi-use housing spaces for families
- Faith community coming together to promote unity
- City promoted many initiatives – brought unity with communication and commitment into the process
- More public transportation, more walking
- Mayo clinic hospital system
- More jobs in the area

Group 4 – Our vision of the future with the technology time capsule

- Population growth, many people of color, who are young, with large senior population
- A body chip used for payment (paper money is defunct!)
- Unmanned patrol cars, robots, and other technology changing Public Safety
- Floating cars, programmable cars (“1 car – why have 3?”)
- Decentralized school system (and a better partner to them!)
- Decentralized healthcare system
- Welded plastic
- No more post office!

Group 7 – Expansion, Growth, Support, & Diversity

- Mayor Aneesa, with a group of diverse decision makers in the City
- City focused on affordable housing and childcare
- Expanded entertainment district
- Solar farms coming offline to allow for compact fusion reactors
- Charging stations have taken over vacant Super Americas
- Southwest Beltway is moving forward!
- The Slant (companion to The Ledge) doing well
- Amazon drones set on fire by fire-breathing Mayor Rick Miller statue
- Cessation of quarry operations has allowed for more homes
- Dept of Public Safety has 35 officers and is very diverse, COP House has grown
- Drones check on traffic violators
- Spiritual & Cultural Center drives message to be caretakers of one another’s stories
- New “Becky Estrada Elementary School” with local mental health clinic support
- Waite Park Community College built and supports the trades
- Transportation system is very supportive of people with disabilities
- Expanded parks and walking paths

Group 3 – Waite Park: Where the world connects

- Monorail and free shuttles
- Multi-level, diverse community housing
 - Progressive dinners with families
- Corporate Office Development (carbon neutral!), skilled and diverse workforce
 - City opened up development for new businesses from Comp Plan (3M, Google)
- Recreational opportunities and making the City beautiful
- Waite Park International Comm. Center
 - Includes support for seniors, youth, and resources for all
 - Multi-cultural restaurant options
 - Expanded park system
- Gateway International Mall
 - Kiosks for small businesses, multi-cultural food options, & boutiques

Group 1 – Floyd's Fan Club

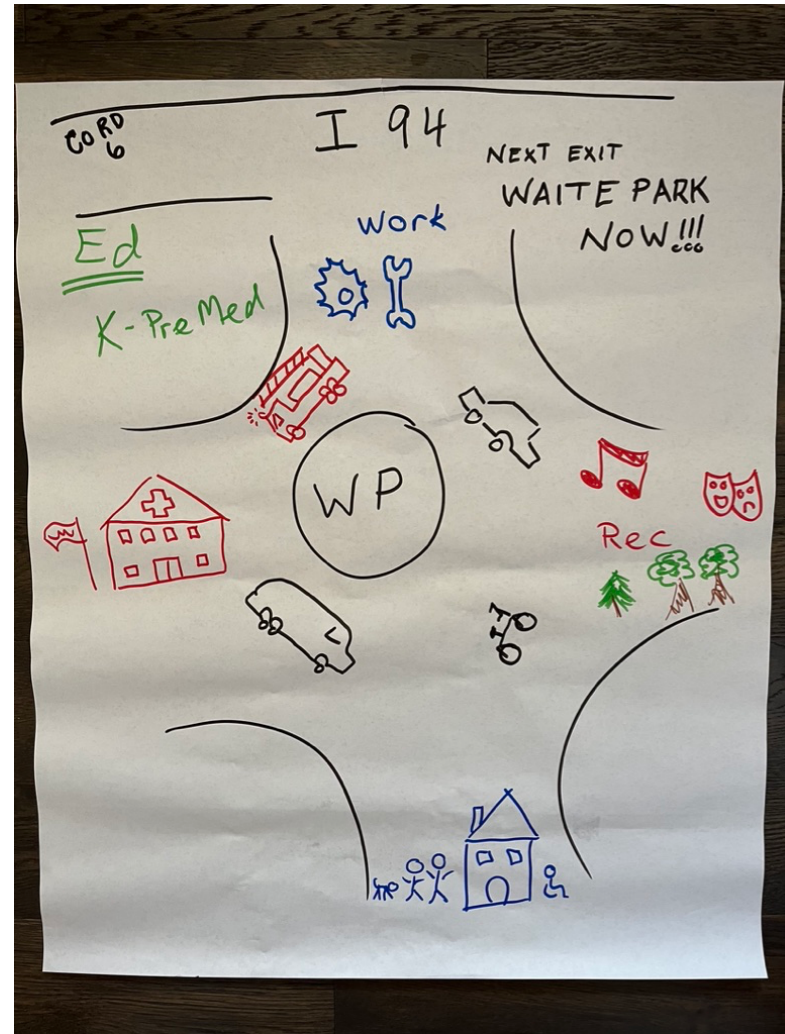
- Google and Amazon have come to Waite Park
- Premier educational facilities, partnered with large businesses, 100% graduation rate
- Crossroads thriving, can virtually view how an item will fit
- National acts fight to perform at The Ledge, which is thriving!
- Expansion of Public Safety facility
- Affordable, multi-generational housing options
- Outdoor water park is here!
- People from all around the world live and play in Waite Park, with instant language translation
- Mayo hospital system
- Minnesota United soccer training center
- Scheels builds world's largest Ferris wheel within shopping center
- Mayor Rick Miller not running again, after 40 years of service

Group 2 – It's a Beautiful Day in the Neighborhood... in Waite Park

- Community inclusiveness – diversity and language inclusiveness is the norm, not the exception
- Transportation connected for all, community is very well connected
- Affordable housing – diverse options (includes tiny homes!)
 - Connections to bus and trail systems
 - Amenities for community members
- School investment and funding have given opportunities to students
- COP House connects schools, seniors, and businesses
- Recreation & entertainment has expanded, with a Sports Complex
- Visitor's Center takes advantage of natural amenities (Sauk River, biking), affordable
- Indoor water park!
- Proud of our Arts Center, showcasing our diversity and integrating into parks and trail system
- Entertainment District showcasing The Ledge, with extreme dining opportunities
- Industrial parks expanded and have added new jobs

Group 6 – Waite Park: A diverse place to call home
(There's something for everyone here! Woot Woot!)

- I-94 with new exits, taking a stop there!
- Education has expanded and grown
 - Adult and community education
 - Waite Park school district
 - World Language Center (7 languages!)
 - Waite Park Pre-Med High School, Performing Arts High School
- Center of Waite Park Commerce
 - Diverse group of businesses
 - Self-sufficient community
- Rec and Art District
 - Recognized as the nation's most beautiful park system
 - Opportunities for all (young children to seniors)
 - Gambling opportunities
 - Soccer
 - Grand Theater, The Ledge is successful (Willy Nelson!)
- Self-sufficient, affordable housing for all
- Full-time Fire Chief!



Day Three: Common Ground, How to Get There, & Unresolved Differences

(See Connecting Vision Statements – Common Ground – on page 2)

Ideas of how to get there (how)

<ul style="list-style-type: none">• Transportation:<ul style="list-style-type: none">○ SW Beltway Construction○ New exit on I94/Beltway○ 10th Ave Development○ County Rd 6/I94 Interchange○ Roads○ Expand Public Transportation• Provide world class educational opportunities:<ul style="list-style-type: none">○ Cop House○ Specialty high school• The Arts:<ul style="list-style-type: none">○ Business incubator space with % of project costs go to the Arts○ Community Center/theater• Housing & Developments:<ul style="list-style-type: none">○ Housing/Development incentives○ New developments○ Outreach to potential development○ Designating Land/Future Land Use○ Lower fees for Developers, etc.	<ul style="list-style-type: none">• Businesses:<ul style="list-style-type: none">○ Business retention○ Create industrial park○ Create or resurrect the EDA (Economic Development Authority)○ Recruiting large businesses• Other ideas:<ul style="list-style-type: none">○ Expanding trails○ Funding/Bonds○ Redevelopment of Comp plan○ Collaboration/partnership with Mayo Clinic○ Affordable, available childcare
---	--

Unresolved Differences from Common Ground Themes (as they stand from the Future Search event)

Diversity – Creating community relationships in our diversity that are based on respect and **inclusion**. (active relationships?)

- Why was it an “unresolved difference?” – “Inclusion” was a hot-button issue

Healthcare – Accessible, affordable, and **expanded** health care for Waite Park residents.

- Why was it an “unresolved difference?” – Not something the group felt they could effect or that it was under their control – it’s the bigger system

Education – An Educational system, **located in Waite Park**, that gives kids options for accelerated, focused learning and equips students for success. (quality of education, targeted local schools, specialized schools?)

- Why was it an “unresolved difference?” – “Located in Waite Park” – WHAT should be located here? Do we have our own system or are we part of the bigger system with St Cloud?

Technology – Embracing and integrating technology into daily life **without losing personal connection**.

- Why was it an “unresolved difference?” – Too loose. Technology will go forward regardless, we may continue to lose personal connection, and it’s more of a “how.” Let’s keep this in mind in everything we do.

Other Unresolved Differences

<ul style="list-style-type: none">• How to fund• Taxes• Types of housing needed• Prioritization of projects	<ul style="list-style-type: none">• NIMBY- Not in my back yard• How to draw a major medical center• Who is going to do this?
--	--